



U.S. Army Corps of Engineers
Engineering and Support
Center, Huntsville



STANDARD DESIGN CRITERIA SCHOOL AGE CENTERS

FOR CHILDREN AGES SIX WEEKS TO FIVE YEARS OF AGE

SMALL	152 CAPACITY
MEDIUM	280 CAPACITY
LARGE	408 CAPACITY

ROOM BY ROOM DESCRIPTIONS

CATEGORY CODE: 74017

Prepared by:

US Army Corps of Engineers, Huntsville Center

300 SECURED GATEWAY
REDSTONE ARSENAL
HUNTSVILLE, AL 35808

SEPTEMBER 2024



DEPARTMENT OF THE ARMY
HUNTSVILLE CENTER, CORPS OF ENGINEERS
P.O. BOX 1600
HUNTSVILLE, ALABAMA 35807-4301

30 SEP 2024

CEHNC

MEMORANDUM FOR

SUBJECT: Army's Standard Design for School Age Center Ages Six Weeks to Five Years of Age

1. The enclosed Standard Design for design and construction of Child Development Centers are hereby approved for implementation. The Standard Design applies to all Army Child Development Centers for children ages 6 weeks to 5 years of age. Army School Age Centers for children ages 6 years to 10 years of age are addressed by a separate Army Standard Design. Waivers from the Standard Design must be approved and signed the Centers of Standardization.
2. The Standard Design is mandatory for all Child Development Center Military Construction, Army (MCA) projects FY25 and beyond.
3. Per ER 1110-345-100, Army Standard Designs are the definitive and optimum functional, operational, and technical requirements that support doctrinal needs for each facility type they represent.
 - a. The UFC 3- Series and Facilities Criteria (FC) 3- Series (simply referred to as UFC 3- Series) provide discipline-specific criteria requirements for the various engineering disciplines. If conflict occurs between an Army Standard Design and the UFC within the UFC 3- Series, the requirements of the document that is more detailed pertaining to that specific building, facility, structure, or system take precedence.
 - b. The UFC 4- Series and FC 4- Series (simply referred to as UFC 4- Series) provide requirements for multi-disciplinary and facility-specific design. If conflict occurs between an Army Standard Design and a UFC within the UFC 4- Series, the requirements of the Army Standard Design-specific building, facility, structure, or system take precedence.
4. Army Standards and Army Standard Design Criteria: <https://mrsi.erdcdren.mil/cos/hnc/cdcsa>
5. The subject matter experts for Army School Age Centers for children ages 6 years to 10 years of age are Mrs. Micheal Johnson, CEHNC-EDC-A, Micheal.R.Johnson2@usace.army.mil; Mrs. Rajette Hodge, CEHNC-EDC-A, Rajette.L.Smith@usace.army.mil.
6. The USACE Center of Standardization for Child and Youth Services is Mr. Chris Shepherd, CEHNC-EDC-A, Chris.A.Shepherd@usace.army.mil.

CHRIS SHEPHERD
CEHNC-EDC-A
CoS Program and Technical Manager

CHILD DEVELOPMENT CENTERS FOR CHILDREN 6 WEEKS – 5 YEARS

STANDARD DESIGN (SMALL, MEDIUM, LARGE)

Record of Changes (changes are indicated by \1\ ... /1/)

Change No.	Date	Location

This document supersedes the Army Standard Design Criteria CDC Room by Room Descriptions, dated February 2023.

Table of Contents

A.	INTRODUCTION	6
1.	APPLICABILITY	6
2.	COMPLIANCE.....	6
3.	WAIVERS.....	6
B.	GENERAL REQUIREMENTS	7
1.	CRITERIA.....	7
2.	HAZARDOUS MATERIALS.....	7
3.	ARCHITECTURAL	8
4.	MECHANICAL / PLUMBING	12
5.	ELECTRICAL	13
6.	FIRE PROTECTION.....	14
7.	SECURITY AND MONITORING – VIDEO SURVEILLANCE SYSTEM (VSS)	15
8.	CYS/MWR COMMERCIAL ENTERPRISE NETWORK (CEN)	17
9.	SITE AND BUILDING EXTERIOR.....	18
10.	DIAPER CHANGING STATION	21
11.	CUBBIES.....	22
12.	SIGN-IN DESKS.....	23
13.	FOOD PREP/ARTS & CRAFTS CABINETS	23
14.	ROOM FINISH SCHEDULE	24
15.	NET AREAS AND TOTAL GROSS BUILDING AREA	27
16.	TOILET FIXTURE & GRAB BAR SCHEDULE	29
17.	TOILET ACCESSORY SCHEDULE.....	30
18.	HARDWARE SETS	30
C.	INDIVIDUAL SPACE REQUIREMENTS	32
1.	SPACE: Vestibule	32
2.	SPACE: Waiting Area.....	33
3.	SPACE: Central Counter/Reception Area	33
4.	SPACE: Admin Storage	35
5.	SPACE: Isolation Area	35
6.	SPACE: Isolation Area Toilet	35
7.	SPACE: Administrative Offices	36
8.	SPACE: Infant/Pre-Tod/Toddler Activity Room	37
9.	SPACE: Infant/Pre-Tod/Toddler Storage Room.....	40

10. SPACE: Infant/Pre-Tod/Toddler Toilet Area.....	41
11. SPACE: Preschool/Pre-K/Kindergarten Activity Room	41
12. SPACE: Preschool/Pre-K/Kindergarten Storage Room	44
13. SPACE: Preschool/Pre-K/Kindergarten Toilet Area	45
14. SPACE: Buggy Storage	46
15. SPACE: Public and Staff Toilets	46
16. SPACE: Exterior Storage	47
17. SPACE: Janitor Closet	48
18. SPACE: Stroller/Car Seat Area	48
19. SPACE: Training Room.....	49
20. SPACE: Training Room Storage	49
21. SPACE: Staff Lounge.....	50
22. SPACE: Central Storage	51
23. SPACE: VSS Equipment Room	51
24. SPACE: Kitchen	52
24A. SPACE: Kitchen Dry Food Storage	57
25. SPACE: Laundry Room.....	57
26. SPACE: Outreach/Transitional Care Activity Room	59
27. SPACE: Outreach/Transitional Care Storage Room.....	62
28. SPACE: Outreach/Transitional Care Toilet Area.....	63
29. SPACE: Active Play Room.....	64
30. SPACE: Active Play Storage Room	65
31. SPACE: Active Play Toilet Area	66
32. SPACE: Nursing Mother’s Room (Lactation Room).....	67
33. SPACE: Corridor(s).....	67
34. SPACE: Recycling Room (Optional)	68
35. SPACE: Maintenance Storage	69
36. SPACE: Utility Rooms (Mechanical, Electrical, Communications)	70
37. SPACE: Playground/Outdoor Play Areas.....	70
Playground Equipment Lists.....	74
APPENDIX A: GUIDANCE FOR OCONUS LOCATIONS.....	77
APPENDIX B: ACCEPTABLE BID OPTIONS.....	79

A. INTRODUCTION

- 1. APPLICABILITY.** All United States Army Corps of Engineers (USACE) geographic districts shall incorporate the key mandatory design features described herein in close coordination with the USACE Centers of Standardization (COS) for Child Development Center (CDC) facilities.
 - a. New Construction.** This criterion covers all Military Construction (MILCON) of Military Construction, Army (MCA) funded Child Development Center facilities. The functional relationships are mandatory unless variations are approved by the COS. All projects shall be reviewed by the COS to ensure conformance with the Army Standard and Standard Design (SD).
 - b. Repairs, Alterations, Conversions and Additions.** While this document is primarily for New Construction, any Repairs, Alterations, Conversions, Additions, and Remodeling shall comply with the Standard Design Criteria to the fullest extent possible.
 - c. Centers of Standardization (COS).** The COS for the Child Development Center (CDC) facility type is the U.S. Army Engineering and Support Center, Huntsville, AL (CEHNC). In accordance with ER 1110-3-113, the COS maintains Army CDC Standard Designs (SD) and must be consulted during the programming, design, and construction of all projects with primary facilities categorized under Facility Category Codes 74017: Child Development Center - Under 6 Years of Age and 75018: Playground, General Purpose. Army SD plans and criteria supersede Unified Facilities Criteria (UFC) and Unified Facilities Guide Specifications (UFGS) criteria.
 - d. OCONUS Design Guidance.** Per ER 1110-3-113 for the Department of the Army (DA) Facilities Standardization Program, allowable regional variations may be integrated with the SD to accommodate Outside the Continental United States (OCONUS) operational differences, construction materials and methods, and Host Nation building codes, construction regulations, and construction practices, but shall maintain the functional characteristics documented within the SD. When Host Nation Requirements or Specific Geographical Requirements conflict with the Army Standard, contact the COS at CEHNC. See Appendix A: OCONUS Design Guidance for more information.
- 2. COMPLIANCE.** The Army Standard Design applies to Active, Reserve, and National Guard component facilities; on or affiliated with military installations This document provides instructions and definitions necessary for the application of the mandatory requirements contained in the tabular section of the Child Development Center Standard Design. As such, they are used in conjunction with the Army Standard in order to ensure the intent and embedded functionality contained herein shall meet the Army’s mandatory requirements set forth by this standard.
- 3. WAIVERS.** All requests for a waiver to the Standard Design require COS conflict resolution prior to submission by the Project Manager or Project POC.
 - a.** Army Standard Design waiver request submissions shall be received in sufficient time to allow the completion of the COS Team’s review and development of recommendations or

courses of action for the COS Program and Technical Manager to consider prior to implementation into project design.

b. All waiver requests shall include compelling rationale of functional and operational deviations to include substantiating documentation in sufficient detail for the Army to assess implications of approving the waiver.

c. Information on the MILCON waiver process may be found at:
<https://mrsi.erdcdren.mil/cos/waiver-process/>.

B. GENERAL REQUIREMENTS

1. CRITERIA. <https://mrsi.erdcdren.mil/cos>

a. **Army Standard Design Criteria.** The Army Standard and the Army Standard Design Criteria Room by Room Descriptions are mandatory criteria that must be followed. Per AR420-1, use of the Standard Design is mandatory. The criteria in this document have incorporated relevant sections of AR 608-10 and IMCOM Reg 608-10-1 (latest version) and all applicable UFCs.

The Army Standard for CDCs is the minimum mandatory criteria that must be followed. This document, the Army Standard Design Criteria Room by Room Descriptions, further expands on the requirements of the Army Standard. Deviations not meeting the requirements of the Army Standard, or this document, require a waiver (see above).

b. **Army Child & Youth Services (CYS) Review and Approval.** Notify the Headquarters (HQ) Installation Management Command (IMCOM) G9 CYS Facilities Team upon inception of any construction, repair, alteration, conversion, and/or remodeling project – this includes kitchens and/or playgrounds. All facility and playground construction projects shall be reviewed and approved by Installation Management Command (IMCOM) G9 CYS. Involvement of IMCOM G9 CYS is required in all phases of the project, to include planning, design and construction.

c. **Architectural Barriers Act (ABA).** The entire CDC and site must meet all requirements of ABA. This includes spaces such as storage rooms, janitor closets, etc. Water closets and toilet compartments for children shall comply with ABA Advisory 604.9 and associated table. This ABA Advisory is mandatory for CDC facilities. Other special requirements will be provided in the remainder of this document.

d. **UFC 3-600-01, Fire Protection Engineering for Facilities.** The CDC must meet fire protection criteria as expanded by the Army Standard and the Army Standard Design Criteria Room by Room Descriptions.

e. **Technical Instruction (TI) 800-01.** TI 800-01 shall not be used in the design or review of a CDC.

2. HAZARDOUS MATERIALS.

a. **Flammability Codes and Standards.** Use textiles and upholstered components that comply with the applicable interior finish requirements stated in UFC 3-600-01, Fire Protection Engineering for Facilities. See Sections 4 (Architectural) and 15 (Room Finish

Schedule) under General Requirements for more information on Interior Finishes requirements.

b. Radon. Check the Environmental Protection Agency (EPA)'s *Map of Radon Zones* (by state), available from <https://www.epa.gov/radon>, to determine the radon priority area. Provide passive sub-slab depressurization systems for projects located in Priority Area No. 1. Change the system to active, if needed, based on follow-up testing. See also the latest information available from the EPA Radon information resources for new construction and current standards of practice.

c. Contaminants. Evaluate the site for potential soil and groundwater contamination. Check with the Environmental Installation Restoration Program and the Underground Storage Tank Program. Also, check previous uses of the site.

d. Lead-Based Paints. Lead-based paint is prohibited throughout all buildings—interior and exterior, including playground equipment. All painted areas suspected of containing lead (manufactured before 1978) should be tested and managed by the Garrison Directorate of Public Works (DPW).

e. Asbestos. Materials containing asbestos are forbidden throughout the facility. Any suspected asbestos containing material should be identified and abated by a certified contractor and monitored by the Installation Asbestos Management Program (IAMP).

3. ARCHITECTURAL.

a. Construction. The Child Development Center shall have a residential scale and feeling but shall meet commercial construction standards in accordance with UFC 1-200-02. The building may be rotated or mirrored on the site.

b. Spaces. Functional spaces, which include all Child Activity Rooms, Admin Areas, Kitchen, Storage, Staff Lounge and Training Room, may not be reduced from what is shown in this document (See Section 16. Net Areas and Total Gross Building Area) and the Army Standard without an official waiver.

c. Army CDC facility Child Activity Rooms (CARs) include:

- a)** Infant/Pre-Tod/Toddler Activity Room
- b)** Preschool/Pre-K/Kindergarten Activity Room
- c)** Outreach/Transitional Care Activity Room
- d)** Active Playroom

d. Recycling. A dedicated recycling room may be included in the facility. However, the space must be taken entirely from the Mechanical Room's allotted square footage. If a room is provided, this room shall open into the corridor and be provided with a door(s) with a half-height glass window. When sizing the recycling area, keep in mind the function of this facility and that the recyclable materials will mainly come from the Staff Lounge and Admin Area. See 34. SPACE: Recycling Room (Optional) for requirements.

e. Roof. Roofs shall be a simple gable or hip with minimal level changes to maintain the residential feel of the overall facility. The roof slope shall be a minimum of 3:12 for pitched roofs or as defined by the Installation Design Guide, State Historic Preservation Office

(SHPO), and other standards as may apply. Flat roofs are not allowed (unless compatibility to an existing structure is required).

The preferred roof for the CDC is a standing seam metal roof system. Provide snow guards as needed.

f. Minimum Floor and Base Construction. For finish materials refer to the Room Finish Schedule unless additional guidance is provided in the individual space descriptions which follow. Salient characteristics include shall be easy to clean and maintain and shall be durable. A base material, appropriate for the flooring material used, is required.

g. Minimum Wall Construction. Unless additional guidance is provided in the individual space descriptions which follow, salient characteristics include shall be easy to clean and maintain and shall be durable.

h. Interior Walls. Unless noted otherwise, interior walls between rooms shall be provided with acoustical batt insulation to match the stud wall thickness to achieve the required R value. All interior walls shall contain 5/8" drywall and all electrical outlets shall be staggered. Unless noted otherwise, interior walls between rooms shall be provided with acoustical batt insulation, or other approved system, to obtain minimum Sound Transmission Class (STC) ratings in accordance with UFC 3-101-01 and UFC 3-450-01.

i. Wall Finish. Impermeable wall finishes, such as vinyl wall covering or Fiberglass Reinforced Paneling (FRP), are not acceptable, unless noted otherwise. This is a mold prevention issue.

j. Corner Guards. Corner guards are to be surface mounted and provided on all outside corners of interior walls. Corner guards are to be integral color, radiused, sufficiently durable to prevent damage to the wall corners and injury to the children, and mechanically fastened (not through tape or adhesives) to the wall. Corner guards are to be caulked and sealed to prevent harborage of vermin and accumulation of debris. Corner guards shall be minimum 48" (1220mm) high and set flush and tight to the adjacent walls.

k. Minimum Ceiling Construction. Unless additional guidance is provided in the individual space descriptions which follow, salient characteristics include ease of accessibility to mechanical system above ceiling, durable, and shall provide an aesthetically pleasing surface, free of sags or other defects. Acoustical tile ceilings shall have a minimum Noise Reduction Class (NRC) rating of 0.85 throughout the facility. Unless noted otherwise, Ceiling Attenuation Class (CAC) ratings shall be a minimum of 35.

l. Ceiling Heights. Unless noted otherwise in this document, all ceiling heights shall be a nominal 9' (2.7m). Ceilings in the kitchen may exceed 9' (2.7m). Ceilings in storage rooms are desired to be a minimum 9' (2.7m) to allow increased storage under the "fire" line which is located at 18" (457mm) below the lowest part of the sprinkler head, or in accordance with NFPA 13. See 7. Fire Protection Storage Height Limitation Line for more information. The furr-down over the Central Counter may be lower than 9' (2.7m) , but no less than 7' (2.1m). The Active Playroom ceiling shall be 9' (2.7m) minimum over at least 75% of the room.

m. Exterior Doors. All exterior doors from the facility shall be flush within 1/4" (6mm) with the exterior sidewalk for evacuation of cribs in the case of an emergency. The exterior pathways from activity room and corridor doors shall meet the requirements of the ABA and be appropriate for crib evacuation. All exterior doors shall be hollow metal with a half-height

glass view window unless noted otherwise. All exterior doors shall be provided with hardware on the exterior side that allows for re-entry. All exterior exit doors shall have full-width push pad panic hardware and self-closing devices. Exit door hardware mounting heights shall be in accordance with ABA above the finished floor and shall have a clear opening width of 32" (812mm) minimum.

n. Intrusion/Exit Alarms: Exit notification system with keyed manual override is required at all exterior doors that do not exit directly into a fenced area, except for the main entrance and the kitchen delivery door. These alarms must provide immediate notification; they cannot have a delay.

o. Interior Doors. Salient characteristics include durability. Doors, frames, and hardware shall be able to withstand constant opening and closing. Unless noted otherwise, doors shall be solid core wood doors, stain grade. Glazing in interior half-height glass doors shall be a minimum of 5 square feet of exposed clear safety glass. All interior doors shall be half-height glass, except for adult toilet room doors and the Nursing Mother's Room. All doors opening into corridors and all doors into toilet rooms must be provided with self-closing devices. All fire rated doors shall meet UFC 3-600-01 requirements to include self-closing devices. Metal frames shall be painted, and doors shall be stained and sealed.

p. Finger Guards. Finger guards shall be provided on doors as noted per the following Individual Space Requirements for each room. Finger guards shall be roll-type only and extend up to a minimum height of 48" (1220mm) Above Finished Floor (AFF).

q. Sharp Edges. Radiused corners shall be provided on all millwork up to 48" (1220mm) AFF. Ease or file smooth all sharp points and edges on wall tile, cabinetry, windows, doors and frames, etc. For exposed under-sink piping in any area accessible to children, ABA covering is required. The intent is to eliminate all sharp corners, points, and edges up to a height of at least 48" (1220mm) AFF.

r. General Cabinetry. Salient characteristics include easy to clean, maintain and repair. Cabinets shall be durable and be able to withstand impacts from carts, strollers, buggies, etc., without showing damage. For safety, all edges, both vertical and horizontal, shall be eased or rounded. No sharp edges may be provided. Cabinetry is to be caulked and sealed to prevent harborage of vermin and accumulation of debris.

a) Cabinets shall be a minimum of Architectural Woodwork Institute (AWI) 400B, Custom Grade, minimum 5-ply hardwood plywood veneer core (particle board and MDF is not acceptable) clad with High-Pressure Laminate (HPL). Other finishes meeting or exceeding the performance of HPL (such as a high-pressure, solid composite surface material) may be considered.

b) All base cabinets in the facility denoted as lockable shall be keyed alike. Base cabinets in child accessible locations may be provided with magnetic locks as a safety measure.

c) Countertops shall be a durable, low maintenance, stain resistant, solid surface quartz (quartz agglomerate – NSF certified or host nation equivalent, non-porous solid surface) with back splash. Countertops shall be sealed to the base cabinetry and have rounded/radius corners and edges (refer to Sharp Edges above).

s. Exterior Windows. Where exterior windows are provided, the following requirements shall be met. Shall comply with UFC 4-010-01 ATFP requirements. Salient characteristics include easy to clean, operable, and able to withstand continuous use. Provide windows of residential size and type to maintain the residential feel of the overall facility. Natural ventilation is required.

a) Individual windows are preferred to be single or double hung, with only the top portion operable; bottom sash shall be fixed. If double hung windows are provided, the bottom sash must be secured so that it cannot be opened, and such modification shall not affect the warranty on the window. Full height insect screens shall be provided. Secure insect screens with interior metal clips to preclude children from removing the clips. Windows shall be provided with a manual locking mechanism in addition to the sash latch mechanism. Where windows with sash latching mechanisms higher than 80" (2032mm) AFF are provided, the contractor shall also provide a minimum of one (1) latching/unlatching mechanism (pole mounted) for each room with operable windows.

b) Windows shall be provided with a non-porous, smooth, and easily cleanable, solid surface quartz windowsill mounted 18-20" (457 – 508mm) above the finish floor per the Army Standard. Wood and plastic laminate windowsills are not allowed. Exposed edges shall be eased per the Sharp Edges paragraph above.

c) For child safety, window shade systems shall maintain visibility from the Playground into the Activity Room and be cordless.

t. Glass. All glass shall be provided with a manufacturer's label indicating that the glass is safety glass.

u. Mirrors. All mirrors in the facility shall be a tempered safety glass mirror, with stainless steel surround, including a clear film applied to mirrored surface to retain glass pieces, if somehow the tempered mirror is cracked accidentally.

v. View Windows & Vision Panels. View Windows are interior windows where the actual glass is to extend from 18" - 24" (457 - 610mm) above the floor to the height of the top of the door. Vision Panels are interior windows where the actual glass is to extend from no more than 51" (1296mm) above the floor to the height of the top of the door. It is desired that the top frame of the windows aligns with the top of the door frame, and that the bottom frame of the vision panels is right above the cubbies. Shades may be provided on these View Windows and Vision Panels based on local Physical Security requirements.

w. Caulking. All caulking used inside the building shall be US Department of Agriculture (USDA), National Sanitation Foundation (NSF) approved caulking or Host Nation equivalent that meets national sanitation standards.

x. Grout. Where porcelain, ceramic or quarry tile is provided, grout shall be non-staining and resistant to liquid absorption.

y. Showers. Showers and changing rooms are typically not allowed due to child abuse prevention measures.

z. Toilet Partitions. Toilet partition doors shall include latching hardware but shall not include coat hooks. In the ABA toilet stalls in the pre-school/pre-k/kindergarten activity rooms and outreach/transitional care activity room, toilet partitions shall have a headrail (overhead-braced) or shall be otherwise mounted to assure rigidity of all posts and panels. These ABA toilet stalls shall be provided with one in-swinging regular width door (+/- 24" (610mm) wide),

and one out-swinging ABA-compliant (min. 32" (812mm) clear opening width) door. Floor mounted partitions are required. Partitions shall be color-through phenolic or solid plastic (HDPE). Exposed boots and hardware shall be non-corrosive material.

aa. Kitchen Equipment. Shall be commercial equipment NSF approved. Kitchen equipment will comply with UFC 3-600-01, equipment will be contractor furnished and contractor installed (CFCI). All equipment must be designed and installed in accordance with the Technical Bulletin Medical (TB) Med 530 Tri-service Food Code.

bb.Special Kitchen Requirements. Kitchen designs are provided in the standard designs. The final kitchen design must be verified by a certified kitchen designer in accordance with TB Med 530 Tri-service Food Code and in coordination with IMCOM G9 CYS and the Preventive Medicine Proponent.

4. MECHANICAL/PLUMBING.

a. Temperature Controls. Temperatures in child activity rooms/modules maintained at no less than 68 degrees F (20°C) in the winter and no higher than 78 degrees F (25°C) in summer. Temperature range must be maintained within one foot above the floor with a combination of conditioned and natural air. Tamper proof temperature and air quality measurement/ monitoring devices shall be installed with the operable mechanism mounted at 44" - 48" (1117 – 1220mm) elevation above floor. A relative humidity of between 35 and 50 percent will be maintained in the facility, especially in the activity rooms, to prevent drying of mucous membranes, to control the spread of diseases, and to prevent mold growth. In addition to the temperature sensor in the thermostat, a second temperature sensor is used to measure the temperature at 1 foot (0.3m) above the floor. The sensor must be virtually flush with the wall (no more than ½" (13mm) projection) and shall not include any controls or other safety concerns. The thermostat and the sensor shall be located in the wall near the center of the activity space, not adjacent to the entry door, and not near the toileting area.

b. Exhaust Points. Maintain an odor free environment in toilet areas and in child activity spaces serving non-toilet trained children through two (2) individual exhaust pick-up points, each providing minimum 150 cubic feet per minute. One shall be provided in the toilet area, and one will be located directly over the diaper changing station. There is a critical need for redundancy when providing a central exhaust system.

c. Water Temperature. The appropriate temperature for the water in child accessible areas is a range of 80 to 95 degrees F (26-35°C), with a maximum of 110 degrees F (43°C) in child accessible sinks. Provide anti-scalding devices for all child accessible sinks.

a) Water temperature in the laundry room, janitor's closet and the kitchen are required to be 140 degrees F (60°C). The final rinse (sanitization) of the dishwasher and ware washing will be 180 degrees F (82°C) provided by means of an adequately sized booster heater.

d. Automatic-Sensor Plumbing Fixtures. Automatic flushing water closets with an accessible manual override and automatic lavatory faucets are permissible in staff and public toilet areas. These fixtures shall be equipped with an automatic sensor activation system that provides touch-free operation to enhance hygiene and convenience. Additionally, each fixture must include a manual override feature to allow for operation in the event of sensor malfunction or for specific user needs. The manual override control shall be durable and

capable of withstanding repeated use. The override control must be designed to work independently of the sensor system, ensuring functionality in case of sensor failure. The fixture shall be capable of adjusting flow rates and durations as required, with settings adjustable via an intuitive interface. The sensor's detection range and sensitivity shall be adjustable to accommodate various installation environments and user needs. The fixture must meet or exceed industry standards for water efficiency and performance. See Individual Space Requirements for acceptable metered faucet criteria in child accessible areas.

e. Pediatric Lavatory Faucets. The preferred faucet at pediatric lavatories is a pre-mixed, front push button faucet instead of the typical, top push down faucet.

f. Water Closets. Child size toilets are available from only a couple of manufacturers and are in limited stock. There is a possibility these will be a long lead item. Substitutions of larger toilets will not be accepted. Please take long lead times into consideration when ordering. Provide appropriately sized toilet seats for all water closets.

g. Drinking Fountains/Electric Water Coolers/Bottle Fillers. Where an activity room requires a drinking fountain, it shall be a non-refrigerated fountain, similar to the photo below (to maintain the residential feel of the overall facility, a stainless finish is not preferred). All corners must be rounded or eased.

a) Where Electric Water Coolers (EWC) are permitted in the facility, at least one of them shall be provided with an automatic water bottle filler.



5. ELECTRICAL.

a. Receptacles. Wall mounted receptacles shall generally be mounted 18" (457mm) above finished floor unless otherwise noted. Above counter, receptacles shall be mounted in the vertical wall space above the counter-top unless otherwise noted. Coordinate the location of wall mounted receptacles located above the "cubbies" with the vision panels. Outlets shall be tamper-resistant throughout the facility in accordance with the National Electric Code (NEC). As a minimum provide two (2) combination 3.1 Amp charger USB/electrical outlets in reception counter, staff lounge, training room, administrative and office areas (to include the cook's workstation), and one (1) above the counter at the sign-in desk in each child Activity Room.

b. Lighting. There is a mixture of natural and artificial light which can be adjusted by the staff to changing outside light levels. Lighting in the Activity Rooms shall be overhead and be provided with multi-ballast fixtures to provide lighting flexibility of all lamps/all fixtures on, half lamps/all fixtures on, and all lamps/fixtures off. The intent is to be able to reduce lighting levels to address different activities and to address natural daylighting. Lighting shall be controlled by manual wall switches located at the room entrance door and at the direct exit to the outside. If dimmer controls are used in lieu of multiple switches, provide lighting fixtures which will not oscillate visibly at low intensities. Roof overhangs and window shade systems

control the natural light-brightness ratios and lateral differences in illumination. Lights come from behind most activities and children. There are sufficient controls over the natural and artificial light to give lighting flexibility. Multi-ballast switches, dimmer switches, track lighting, movable lights, etc., are used to meet this requirement. See room specific requirements for more details.

c. Lighting Controls. Due to child abuse prevention measures, automatic motion light switches (occupancy sensors) are allowed only in rooms not accessible to users and staff of the CDC. Daylighting sensors are permitted and may be installed to optimize the use of natural light within the space, reducing artificial lighting energy consumption.

d. Telephone/Intercom.

a) TELEPHONE: Each activity room shall be provided with a system that is capable of making local and long-distance calls. Incoming calls shall be received at the reception desk, and the reception desk can then forward the call to the appropriate room as necessary.

b) INTERCOM: The Building Construction Contractor shall provide a two-way addressable system capable of allowing program staff to communicate (hands free) with the main reception desk and other locations of the facility as noted throughout this document. System shall be audible throughout the entire space. Each station shall have the ability to receive and send. The system should enable front desk staff at the master console to contact rooms individually and all rooms simultaneously. Operable mechanisms shall comply with ABA. The mechanical, communication, and electrical rooms do not need to be on this system.

i. Phone and Intercom communication systems may be combined where technology allows, and functional equivalents can be maintained.

ii. Intercom panel location in CARs to be coordinated with local CYS for placement in the room.

iii. See 35. SPACE: Playground/Outdoor Play Areas for exterior intercom requirements.

e. Panels. In general, electrical circuit breaker panels shall be located in appropriate electrical rooms. If this cannot be accommodated, panels may be located in the corridors if provided with keyed locks.

f. GFI. Ground Fault Interrupter (GFI) outlets shall be installed per electrical code.

g. Water Coolers. Electricity for the Electric Water Coolers (EWC) shall be per manufacturer's instructions, but in no case shall the electrical outlet and cord be located outside of the area encompassed by the EWC, where it would be easily accessible. All EWC shall be GFI protected.

h. CYS Commercial Internet/Wi-Fi: Entire facility shall be commercial Wi-Fi enabled and shall be capable of supporting Virtual Lab School (VLS) training, child programming, teaching curriculum, etc. See Section 9. CYS/MWR Commercial Enterprise Network (CEN) for further details.

6. FIRE PROTECTION.

a. Emergency Lighting. Emergency lighting shall be provided in all occupied rooms, including the Mechanical Room and Electrical Room.

b. Fire Protection Systems. Occupancy Classification is “Day Care” in accordance with NFPA 101, Life Safety Code.

a) Provide complete automatic sprinkler system, fire alarm/mass-notification system, and carbon monoxide detection in accordance with UFC 3-600-01 and UFC 4-021-01. Provide smoke detection in all areas including closets over 20 sq. ft. (1.8m²) except the kitchen, entry vestibule and spaces not climate controlled such as the attic, walk-in coolers, and the mechanical equipment room. Maintain smoke detectors at least 3 ft. (0.9m) from all HVAC diffusers. Heat detectors are not required in any area because the facility is fully protected with a sprinkler system. Fire caulking shall be red in color making it easily distinguishable from standard caulking.

c. Fire Extinguishers. Provide portable fire extinguishers in accordance with UFC 3-600-01. As per AR 420-5, they are CFCI.

d. Fire Extinguisher Cabinet. A recessed fire extinguisher cabinet shall be provided where portable fire extinguishers are required. Kitchen, mechanical and electrical do not require cabinet.

e. Storage Height Limitation Line. In rooms where shelves are provided (to include Janitor Closet, Storage Rooms, Stroller/Car Seat Area, etc.), interior walls shall be marked with a red line 1” (25mm) in width located 18” (457mm) below the lowest point of the sprinkler head. The red line shall be provided on the walls with shelves as a minimum. In addition, where adjustable shelves are provided in storage rooms, shelving standards shall be mounted so that the top of the bottom shelf can be located 1.5’ - 2’ (0.4 – 0.6m) above the floor. There is no need to plan for the top shelf to be any higher than 3’ (0.9m) below the ceiling.

7. SECURITY AND MONITORING – VIDEO SURVEILLANCE SYSTEM (VSS).

a. Requirements. The VSS (commonly referred to as Closed Circuit Television, or CCTV) shall include visual and audio recording. This system does not transmit data external to the facility. See section 23. SPACE: VSS Equipment Room for additional information.

b. Power.

a) VSS POWER SUPPLY: Power for the VSS shall be distributed from the SER rack mount power supply to each camera location (Class 2 limited power source - low voltage system - 24VAC to the cameras). Coordinate the number and location of cameras provided for each facility with the COS and IMCOM G9 CYS.

b) SURVEILLANCE EQUIPMENT RACK (SER): The circuit shall be terminated with a 3-prong receptacle (L5-30P3W125V) recess-mounted in the location designated for the SER.

c) Small Facility – At a minimum, a dedicated NEMA 30 Amp 125V circuit is required.

d) Medium And Large Facilities - Two (2) at a minimum, a dedicated NEMA 30 Amp 125V circuit is required.

e) PARENTAL VIEWING MONITOR (PVM): A standard 110 VAC receptacle shall be installed at the location designated for the PVMs. The receptacle shall be mounted above the drop ceiling and can be tied to any circuit in the facility.

f) PVM WORKSTATION (PWS): A standard 110 VAC outlet shall be made available at the reception desk, for the PVM workstation.

c. Electrical Metallic Tubing (EMT). EMT shall be sized in accordance with the National Electric Code (NEC) based upon the type, gauge and quantity of cabling and wiring installed within the EMT. The conduit fill rate shall conform to the NEC standard.

d. Power Cable. Note: Cameras are not analog. They are digital and run on Power Over Ethernet (POE). Preferred cable is Multi-Conductor-Enhanced Category 6 Nonbonded-Pair Cables 4-pair U/UTP CMP Reel-in-Box Gray, such as Belden 2413008A1000.

a) All cables shall be one continuous run. Splicing is not acceptable.

b) In the location designated for the SER (VSS Equipment room), leave 20' (6m) excess coil of power cable.

e. Video Camera Cable. Note: Cameras are not analog. They are digital and run on Power Over Ethernet (POE). Power and Video shall be on the same POE cable. Preferred cable is Multi-Conductor-Enhanced Category 6 Nonbonded-Pair Cables 4-pair U/UTP CMP such as Belden 2413008A1000.

a) Note: EMT, cables, and power cables that are specifically designated for use by the VSS system should homerun to the VSS SER in the VSS Equipment Room, not the (NIPR/NEC) Communication Room.

b) Cable runs should be kept under 275 feet (83.8m) where possible and should not exceed 327 feet (99.6m). This distance can be lengthened with the use of extenders; however, it does result in degradation of signal and should be avoided whenever possible.

c) For MILCON CAT6 recommend terminated, labeled, and tested end-to-end with test results. For exterior junction boxes, ensure grounding is executed. (Note: between junction and camera mounting location the use of Liquid Tight conduit or Metal Flex for runs less than nine feet in length).

f. Ceiling Installations. In areas with drop ceilings, run conduit (w/ video and power cabling) above the ceiling from SER location to each camera location. Leave 6' (1.8m) excess coil of power and video cable tied up at the camera location.

a) In areas w/o dropped ceilings, run conduit (w/ video and power cabling) above ceiling from SER location to each camera location. Provide one (1) single gang receptacle box, recess mounted on the wall no more than 12' (3.6m), and no less than 8' (2.4m), above the fixed floor at each camera location (the closer to 12' (3.6m) is preferable for greater field of view.) All receptacle boxes in the same area shall be mounted at the same distance from the fixed floor.

b) In areas with exposed conduit, provide one (1) octagon box surface mounted on the wall no more than 12' (3.6m), and no less than 8' (2.4m), above the fixed floor at each camera location (the closer to 12' (3.6m) is preferable for greater field of view). All receptacle boxes in the same area shall be mounted at the same distance from the fixed floor.

g. Exterior Cameras. In areas where cameras are to be installed on building exterior, run conduit (w/ video and power cabling) from SER location to the adjacent interior location. Leave the requested 6' (1.8m) excess coil of power and video cable tied up at the location. Do not penetrate the wall, if required, a 4"x 4" (101mm x 101mm) junction box and sleeve will be installed during camera installation. Request a #12 solid ground wire at each designated exterior camera location. Suggested grounding options are:

a) Grounding wire(s) to be attached to a grounded conduit run or run grounding wire from communication room/SER location to exterior cameras. If option #2 is the method of grounding, provide a #6 or #8 ground wire from communication room/SER location to a power panel.

h. Cat-6 Cable and Connection. A 10/100/1000 Base-T CAT-6 circuit shall be provided between the facilities administrator's office and the SER location. A second 10/100/1000 Base-T CAT-6 circuit shall be provided between the PVM workstation location at the reception desk and the SER. This shall include a terminated RJ-45 receptacle at the administrator's office and the PVM workstation location. At the SER, both circuits shall be un-terminated with 20' (6m) excess coiled in overhead.

i. **Pull Box.** A pull box shall be installed at the PVM with an EMT wire path between it and the PVM workstation location. All EMT shall be a minimum of one inch in diameter.

j. **Diffusers/Register/Grilles.** Do not install diffusers, registers, or grilles above a location designated for SER. Forced heat during winter months may cause over-heating of equipment.

k. **Cable Trays.** Use cable trays throughout the facility. Recommend using tray to get camera wires as close to the camera locations as possible. Then run conduit to the exact locations using the most direct route.

8. CYS/MWR COMMERCIAL ENTERPRISE NETWORK (CEN).

a. **Requirements.** External Wide Area Network (WAN) connectivity to the CEN will be provided by a single carrier with a minimum bandwidth speed of 1G.

b. Rack/Space/Power.

a) **RACK Requirement:** At least 12U of rack space. Depth should have a maximum of at least 22 inches. Enclosure should be lockable. Can be on floor or wall mounted.

b) **POWER Requirement:** At least 6 outlets close to the rack for power on 2 separate and dedicated 120v circuits.

c. **Communications Room:** A dedicated room shall be made available for the existence of telecommunications and IT related equipment/switches. Room sizing and conduit fill rate shall conform to National Electric Code requirements. See Standard Design floorplans and Section 34. SPACE: Utility Rooms (Mechanical, Electrical, Communications) for additional information.

d. **Fiber Availability:** For external building connectivity to the NEC, fiber will be made available by the Government to the CEN service provider. For internal building extensions, fiber should be run to supplementary communication closets/racks for any distance exceeding 275' (83.8m) from the main communication closet.

e. **Network Enterprise Center (NEC):** At minimum a pair of single mode fiber optic cable between the NEC and the CYS Facility (either direct or cross-connected from other buildings-direct is preferred) is required. For breaks, future proofing, or expansion, a second or third available pair is preferred. This requirement is in addition to any fiber optic cable that will be used for the NIPRNet and VSS.

f. Cabling and Inside Wiring: Access Points for Wi-Fi access to users run on Power Over Ethernet (POE). Preferred cable is Belden 2413008A1000; Multi-Conductor-Enhanced Category 6 Nonbonded-Pair Cables 4-pair U/UTP CMP Reel-in-Box Purple. Likewise, any direct connections to wired user equipment will use the same specifications for CAT6 cabling.

a) Ceiling Installations. In areas with drop ceilings, run conduit (w/ fiber optic cable and/or CAT6 cabling as appropriate) above the ceiling to each general access point location. Service provider will patch/extend to precise AP installation per design criteria.

b) In areas w/o dropped ceilings, run conduit (with fiber optic cable and/or CAT6 cabling) above ceiling to each access point location. All receptacle boxes in the same area shall be mounted at the same distance from the fixed floor.

c) In areas with exposed conduit, provide one (1) octagon box surface mounted on the wall no more than 12' (3.6m), and no less than 8' (2.4m), above the fixed floor at each AP location (the closer to 12' (3.6m) is preferable for greater field of view). All receptacle boxes in the same area shall be mounted at the same distance from the fixed floor.

g. Exterior Access Points. In areas where access points are to be installed on building exterior, run conduit (w/ fiber optic cable and CAT6 cabling) to the adjacent interior location. Leave the requested 6' (1.8m) excess coil of CAT6 and fiber tied up at the location. Do not penetrate the wall, if required, a 4"x 4" (101mm x 101mm) junction box and sleeve will be installed during access point installation. Request a #12 solid ground wire at each designated exterior access point location.

h. Pull Box. A conveyance riser tube shall be installed at the CEN Rack for distribution of interior fiber and CAT6 cabling runs to facilitate AP connectivity throughout the building as well and wired end user equipment.

i. Diffusers/Register/Grilles. Do not install diffusers, registers, or grilles above a location designated for CEN rack. Forced heat during winter months may cause over-heating of equipment.

j. Cable Trays. Use cable trays throughout the facility. Recommend using tray to get access point wires as close to the access point locations as possible. From the cable tray, J-hooks will be used to run the cable to the location of the Access Point (AP) installation. J-hooks are preferred to allow flexibility in moving or adjusting AP location to optimize service.

9. SITE AND BUILDING EXTERIOR.

a. Criteria. Site and building exterior must be in accordance with Host Nation Requirements, Specific Geographical Requirements, Installation Design Guide (IDG) or other garrison criteria.

b. Site Size. Approximate acreage needed per facility size to properly support program space requirements (including building, playgrounds, and parking), surrounding unobstructed space and access drives.

a) Approximate acreage are as follows:

- i.** Small: 3 acres
- ii.** Medium: 5 acres
- iii.** Large: 6 acres

b) ATFP standoff distances, building and site setbacks, fire department access and other Garrison site requirements may vary and affect overall size of the site. Ensure site shape will accommodate CDC standard design layout.

c. Site Layout. The layout of the parking lot and traffic circulation must consider the safety of the children when entering and departing the facility. Parking lots shall be designed such that children are not required to walk behind parked vehicles as they walk from the parking lot to the building. In other words, sidewalks shall be provided immediately in front of or beside the parked car. These sidewalks must be sufficient width to accommodate the overhang of the vehicle and still provide ABA width, be of adequate width to accommodate patrons with strollers and little children and eliminate the possibility of a child being required to walk behind a parked car to gain access to the building. If curbside or parallel parking is provided, parking should be restricted to the right side so children will not exit the vehicle on the street side of the vehicle. If the parking lot design requires crosswalks, as a minimum, these must be painted and identifiable with signage in appropriate locations to ensure the safety of the patrons. In addition to the curb ramps required for ABA, provide curb ramps as needed at all crosswalks for parents with strollers and little children. Where a crosswalk crosses the traffic circulation path, consider placing the walkway on top of a speed table to ensure vehicles have slowed at that location.

a) All sidewalks and exit pathways must be ABA compliant. The sidewalk around the perimeter of the building shall be 6' (1.8m) wide. The sidewalk around the perimeter of the building must be directly adjacent to the building, with no grass or landscaping between the sidewalk and the building.

b) Required fire exits (which includes exterior exits from all activity rooms) from the building will lead to a public way or to a clear safe area which is a minimum distance of 50' (15.2m) from the building. If this is located within a fenced area, they shall terminate at a gate in the playground fence.

c) Locate exterior mechanical and electrical equipment as far from the main entrance as possible. It is recommended that the mechanical yard be located at the side of the facility. Screening is required that is architecturally compatible with the facility.

d) Per AR608-10, AR600-63, and IMCOM Regulation 608-10-1, Smoking is not permitted within 50' (15.2m) of the egress or ingress of the building. An outdoor employee break area may be needed to accommodate smoking in designated areas out of the presence or view of children / youth and away food preparation areas.

d. Ramps. Exterior ramps shall comply with ABA, including ABA Handrails Advisory 505.4 requiring child height handrails in addition to adult height handrails. This Advisory is mandatory for CDC facilities.

e. Parking. The only reserved parking in the patron parking area shall be the minimum number of ABA compliant spaces required. Spaces closest to the door are the preferred spaces for parents with small children and patrons of this facility. Unless required by Leadership in Energy & Environmental Design (LEED), Installation policies, or other standard, it is strongly recommended that reserved spaces for carpools, energy efficient vehicles, etc. not be provided.

a) Rows of parking spaces shall not be provided in dead-end vehicular circulation paths.

b) The number of parking spaces are as follows: (Numbers may not be reduced beyond Army Standard requirements for 1 space per full-time staff member and 1 space for every 4 children.)

i. Small: 123 spaces

- ii. Medium: 202 spaces
- iii. Large: 275 spaces

f. Emergency Access Roads and Fire Lanes. Emergency vehicle access roads shall meet the requirements of UFC 3-600-01. Fire Lanes shall be painted red and marked accordingly. An additional fire hydrant may be required to the rear of the facility based on UFC requirements. Vehicle requirements and Host Nation codes should be considered.

g. Entry Canopy. An entrance canopy shall be provided. The canopy shall be permanent construction and shall enhance the architectural theme of the facility. The minimum area of this canopy shall be 100 square feet (9.3m²), with a minimum dimension of 8' (2.4m) in either direction. Larger canopies are acceptable. Per Army criteria, this area counts as half-scope to the total square footage of the facility.

h. Covered Walkway Option. As an option to be considered in DD1391 development as a supporting facility line item, provide a covered walkway between the main entry and parking to protect arriving children and parents from inclement weather.

i. Wall Hydrants. Freeze-proof, enclosed wall hydrants, 18" (457mm) above finished grade, are required on the walls of the building as noted below. They must be of the frost/freeze protective type with removable cut off handles with integral vacuum breakers. As a minimum, they shall be located as follow:

- a) One (1) by the kitchen door in all size facilities
- b) One (1) in each of the 3 playgrounds in the small and medium facilities
- c) One (1) in the Infant/Pre-Tod playground, 2 in the Toddler/Pre-School playground, and two (2) in the Pre-K/Kindergarten playgrounds in the large facilities

i. A picture is provided below as to the desired type of hydrant. This picture is provided as a guideline only and is not meant to dictate a manufacturer or model.



j. Receptacles. In addition to receptacles required by the UFC, provide appropriate tamper-proof exterior electrical outlets near each set of exterior storage room doors. Mount the outlets at 18" (457mm) AFF in recessed and protective, lockable boxes.

k. Fire Requirements. Fire alarm audio/visual devices and rapid entry fire fighter entry key lock box shall be provided on the exterior of the building, at the main entrance. Key lock box must be supervised by the fire alarm system. In addition to the exterior notification appliances required by UFC or Code, provide at least one (1) fire alarm visual device on the exterior wall for each playground.

10. DIAPER CHANGING STATION.

- a.** The typical Diaper Changing Station is illustrated below. Diaper changing station shall be pre-manufactured or custom made to meet the following requirements. The photos and text below illustrate the desired sizes and features. Diaper changing stations may be configured with the sink on the left or the right. Diaper changing stations shall comply with General Cabinetry requirements above. Diaper changing stations shall be located in the following areas: Infant/Pre-Tod/Toddler Activity Rooms, Preschool/Pre-K/Kindergarten Activity Rooms, and Outreach Transitional Care Activity Rooms.
- b.** Mandatory features include: 24" (610mm) deep by 60" (1525mm) wide cabinetry. 14 pull-out diaper trays, solid surfacing top with integral sink, gooseneck faucet (preferably with manual dual wrist blades), and 5" (127mm) to 6" (152mm) tall curbs – measured in accordance with the manufacturer, pull-out stairs with an integral handrail on the outside edge for ease of opening, and a pull-out area under the sink for location of a trash can and supplies.
- c.** The working surface of the diaper changing station shall be 34" (864mm) above the floor. The side walls shall be 6" (152mm) above the work surface with cutouts at the stairs and sink as shown in photos below. Top shall be white or off-white without pattern or design.
- d.** Stairs shall be provided with rollers or glides for ease of opening and closing. The only portion of the stairs that may be in contact with the floor are rollers or wheels if used. In addition, the stairs shall not have lateral movement from side to side. They must pull straight out and push straight in with no other movement. Stairs shall lock securely in place when pulled out for use. The pull-out stairs shall have an integral handrail on the outside edge for ease of opening. For child safety, stairs shall be provided with closed risers and closed stringers on both sides.
- e.** Doors that conceal the pull-out diaper trays and the pull-out under the sink shall be provided with locks or be magnetic. Cabinet edges shall be eased to avoid sharp corners.
- f.** Locate the paper towel dispenser so that it does not conflict with the diaper changing operation or become a hazard for the child on the diaper changing station. Per the toilet accessory schedule, soap dispensers and a mirror are not required in this location.

g. Diaper Changing Station Image.



11. CUBBIES. A typical design of the pre-manufactured cubbies is illustrated below. The Infant/Pre-Tod/Toddler Activity Rooms have 14 cubbies. The Preschool/Pre-K/Kindergarten Activity Rooms and the Outreach/Transitional Care Activity Rooms have 24 cubbies.

Each cubbie should measure 12” (305mm) wide x 15” (381mm) deep and 48” (1220mm) tall. Provide an upper shelf for hats and gloves, an open area at the base for boots and shoes (no drawers) and two (2) coat hooks in the middle section of each cubbie. Cubbies shall be permanently attached to walls. Provided by Building Contractor.



12. SIGN-IN DESKS. Countertop and cabinet construction shall comply with General Cabinetry in General Requirements above. See Army SD drawings for a typical Activity Room Sign-in Desk illustration.

13. FOOD PREP/ARTS & CRAFTS CABINETS. Countertop and cabinet construction shall comply with General Cabinetry in General Requirements above. A recommended solution for the Food Prep/Arts and Crafts cabinets in the Activity Rooms can be found in the Army SD drawings.

14. ROOM FINISH SCHEDULE.

Note: Finishes shown below represent minimum finishes. Other finishes meeting or exceeding the performance of the finishes shown may be considered. See Army G9 CYS CDC Finish Boards and Interior Room Finish Schedule (latest versions) for color scheme options.

ROOM NAME	FLOOR MATERIAL	BASE MATERIAL	WALL MATERIAL	CEILING MATERIAL	CEILING HEIGHT
1. VESTIBULE	PT / WOM	PT	EPGB	ACT	9' (2.7m)
2. WAITING AREA	LVT	RB	EPGB	ACT	9' (2.7m)
3. CENTRALCOUNTER/ RECEPTION	LVT	RB	EPGB	ACT	9' (2.7m) / 7' (2.1m) min
4. ADMIN STORAGE	LVT	RB	EPGB	ACT	9' (2.7m)
5. ISOLATION AREA	SV	RB	EPGB	ACT	9' (2.7m)
6. ISOLATION TOILET AREA	PT	PT	PT* & EPGB	ACT	8' (2.4m) min
7. ADMINISTRATIVE OFFICES	LVT or CPT	RB	PGB	ACT	9' (2.7m)
8. INFANT/PRE-TOD/ TODDLER ACTIVITY ROOM	SV	RB	EPGB	ACT	9' (2.7m)
9. INFANT/PRE-TOD/ TODDLER STORAGE ROOM	SV	RB	EPGB	ACT	9' (2.7m)
10. INFANT/PRE-TOD/ TODDLER TOILET AREA	PT	PT	PT* & EPGB	ACT	8' (2.4m) min
11. PRESCHOOL/PRE-K/ KINDERGARTEN ACTIVITY ROOM	SV	RB	EPGB	ACT	9' (2.7m)
12. PRESCHOOL/PRE-K/ KINDERGARTEN STORAGE ROOM	SV	RB	EPGB	ACT	9' (2.7m)
13. PRESCHOOL/PRE-K/ KINDERGARTEN TOILET AREA	PT	PT	PT* & EPGB	ACT	8' (2.4m) min
14. BUGGY STORAGE	LVT	RB	EPGB	ACT	8' (2.4m) min
15. PUBLIC & STAFF TOILETS	PT	PT	PT* & EPGB	ACT	8' (2.4m) min
16. EXTERIOR STORAGE	CONC	RB	EPGB	ACT	9' (2.7m)
17. JANITOR CLOSET	QT	QT	CT* or PT* & EPGB	VACT or PGB	8' (2.4m) min
18. STROLLER/CAR SEAT AREA	LVT	RB	EPGB	ACT	8' (2.4m) min
19. TRAINING ROOM	LVT	RB	EPGB	ACT	9' (2.7m)
20. TRAINING ROOM STORAGE	LVT	RB	EPGB	ACT	9' (2.7m)
21. STAFF LOUNGE	LVT	RB	EPGB	ACT	9' (2.7m)
22. CENTRAL STORAGE	LVT	RB	EPGB	ACT	9' (2.7m)

ROOM NAME	FLOOR MATERIAL	BASE MATERIAL	WALL MATERIAL	CEILING MATERIAL	CEILING HEIGHT
23. VSS EQUIPMENT ROOM	LVT	RB	EPGB	ACT	8' (2.4m) min
24. KITCHEN	QT	QT	QT	VACT	9' (2.7m)
24A. DRY FOOD STORAGE	QT	QT	QT	VACT	9' (2.7m)
25. LAUNDRY ROOM	LVT or QT**	RB or QT**	EPGB	VACT	8' (2.4m) min
26. OUTREACH/ TRANSITIONAL CARE ACTIVITY ROOM	SV	RB	EPGB	ACT	9' (2.7m)
27. OUTREACH/ TRANSITIONAL CARE STORAGE ROOM	SV	RB	EPGB	ACT	9' (2.7m)
28. OUTREACH/ TRANSITIONAL CARE TOILET AREA	PT	PT	PT* & EPGB	ACT	8' (2.4m) min
29. ACTIVE PLAYROOM	ATH FL	RB	EPGB	ACT	9' (2.7m)
30. ACTIVE PLAY STORAGE ROOM	ATH FL	RB	EPGB	ACT	9' (2.7m)
31. ACTIVE PLAY TOILET AREA	PT	PT	PT* & EPGB	ACT	8' (2.4m) min
32. NURSING MOTHERS ROOM	LVT	RB	EPGB	ACT	8' (2.4m) min
33. CORRIDOR(S)	LVT	RB	EPGB	ACT	8' (2.4m) min
34. RECYCLING ROOM	LVT	RB	EPGB	ACT	8' (2.4m) min
35. MAINTENANCE STORAGE	CONC	RB	PGB	EXP STRUC	
36. UTILITY ROOMS:					
MECHANICAL ROOM	CONC	RB	PGB	EXP STRUC	
ELECTRICAL ROOM	CONC	RB	PGB	EXP STRUC	
COMMUNICATIONS ROOM	CONC	RB	PGB	EXP STRUC	

Note: An asterisk (*) identifies materials that have a mandatory minimum size or option.

FINISH SCHEDULE LEGEND:

- ACT Acoustical Ceiling Tile (2' x 2')
- ATH FL Athletic Floor – Gerflor Taraflex Multi-use 6.2 flooring system or approved equal.
- CONC Sealed Concrete Floor

CPT	Carpet Tiles (anti-static, 100% solution dyed, min. 60% pre-consumer recycled content)
CT	Ceramic Tile (* = minimum 4'-0" (1.2m) high AFF)
EPGB	Epoxy Painted Gypsum Board (water-based epoxy paint)
EXP STRUC	Exposed Structure
EXTGB	Exterior Gyp Board
PGB	Painted Gypsum Board
PT	Porcelain Tile (* = minimum 4'-0" (1.2m) high AFF)
QT	Quarry Tile (** = to be used on replacement/repair projects for ease of installation based on existing sub-floor conditions) - with grease and acid resistant epoxy grout in the kitchen.
RB	Rubber Base (continuous roll)
SV	Sheet Vinyl (no wax, no finish needed construction)
VACT	Vinyl Faced Acoustical Tile (moisture resistant) on a Suspension System
LVT	Luxury Vinyl Tile (thickness must be 20mil or higher with sound reduction attributes, low VOCs and a min. 30% pre-consumer recycled content)
WOM	Walk-off Mat, LEED compliant

15. NET AREAS AND TOTAL GROSS BUILDING AREA.

ROOM NAME	SMALL 152 Capacity	MEDIUM 280 Capacity	LARGE 408 Capacity
1. VESTIBULE	100sf	100sf	100sf
2. WAITING AREA	266sf	266sf	266sf
3. CENTRALCOUNTER/ RECEPTION	376sf	376sf	376sf
4. ADMIN STORAGE	50sf	50sf	50sf
5. ISOLATION AREA	132sf	132sf	132sf
6. ISOLATION TOILET AREA	45sf	45sf	45sf
7. ADMINISTRATIVE OFFICES			
DIRECTOR'S OFFICE	199sf	199sf	199sf
ASST. DIRECTOR(S) OFFICE	120sf	264sf	264sf
OPEN OFFICE AREA	275sf	595sf	595sf
MVO OFFICE	160sf	160sf	160sf
FLEX SPACE	74sf	74sf	74sf
8. INFANT/PRE-TOD/TODDLER ACTIVITY ROOM	*490sf Program Area, 705sf +/- Net Area (4)	*490sf Program Area, 705sf +/- Net Area (8)	*490sf Program Area, 705sf +/- Net Area (12)
9. INFANT/PRE-TOD/TODDLER STORAGE ROOM	50sf (4)	50sf (8)	50sf (12)
10. INFANT/PRE-TOD/TODDLER TOILET AREA	75sf (4)	75sf (8)	75sf (12)
11. PRESCHOOL/PRE-K/KINDER- GARTEN ACTIVITY ROOM	*840sf Program Area, 1093sf +/- Net Area (3)	*840sf Program Area, 1093sf +/- Net Area (6)	*840sf Program Area, 1093sf +/- Net Area (9)
12. PRESCHOOL/PRE-K/KINDER- GARTEN STORAGE ROOM	50sf (3)	50sf (6)	50sf (9)
13. PRESCHOOL/PRE-K/KINDER- GARTEN TOILET AREA	102sf (3)	102sf (6)	102sf (9)
14. BUGGY STORAGE	57sf	57sf (2)	57sf (3)
15. PUBLIC & STAFF TOILETS	48sf (2)	VARIABLES 48sf min (5)	VARIABLES 48sf (6)
16. EXTERIOR STORAGE	VARIABLES 40sf min (7)	VARIABLES 40sf min (9)	VARIABLES 40sf min (14)
17. JANITOR CLOSET	74sf	74sf	74sf
18. STROLLER/CAR SEAT AREA	43sf	43sf	43sf
19. TRAINING ROOM	330sf	604sf	604sf
20. TRAINING ROOM STORAGE	107sf	107sf	107sf
21. STAFF LOUNGE	600sf	723sf	723sf
22. CENTRAL STORAGE	217sf (total)	217sf (total)	291sf (total)

23. VSS EQUIPMENT ROOM	74sf	74sf	74sf
24. KITCHEN	1242sf	1302sf	1302sf
24A. DRY FOOD STORAGE	In Kitchen	In Kitchen	In Kitchen
24B. WATER SOFTENER [OPTIONAL]	In Kitchen	In Kitchen	In Kitchen
25. LAUNDRY ROOM	211sf	318sf	318sf
26. OUTREACH/TRANSITIONAL CARE ACTIVITY ROOM	*840sf Program Area, 1093sf +/- Net Area	*840sf Program Area, 1093sf +/- Net Area	*840sf Program Area, 1093sf +/- Net Area
27. OUTREACH/TRANSITIONAL CARE STORAGE ROOM	50sf	50sf	50sf
28. OUTREACH/TRANSITIONAL CARE TOILET AREA	102sf	102sf	102sf
29. ACTIVE PLAYROOM	*1080sf	*1080sf	*1080sf (2)
30. ACTIVE PLAY STORAGE ROOM	96sf	96sf	96sf (2)
31. ACTIVE PLAY TOILET AREA	49sf	49sf	49sf (2)
32. NURSING MOTHERS ROOM	64sf	64sf	64sf
33. CORRIDOR(S)	2774sf	4000sf	5116sf
34. RECYCLING ROOM [OPTIONAL]	[78sf]	[78sf]	[78sf]
35. MAINTENANCE STORAGE	219sf	219sf	219sf
36. UTILITY ROOMS			
MECHANICAL ROOM	1245sf	1304sf	1304sf
ELECTRICAL ROOM	140sf	140sf	140sf
COMMUNICATIONS ROOM	206sf	288sf	288sf
CATV ROOM	74sf	74sf	74sf
TOTAL PROGRAMED SPACES	19,375sf	29,106sf	38,881sf
TOTAL GROSS FACTOR (Incl. interior & exterior wall thickness)	2,831sf	1,980sf	2,925sf
CANOPIES (1/2 scope)	294sf	294sf	294sf
TOTAL BUILDING GROSS	22,500sf	31,380sf	42,100sf

NOTE: An asterisk (*) identifies Program Space that has a mandatory minimum size. This Net Program Area is used exclusively for program activity, excluding diaper changing, food preparation, toilets, storage areas, installed millwork, door swings, and dedicated circulation space.

Numbers in () = quantity of these rooms in the building.

NOTE: Gross Square Feet (GSF) Deviation – The facility constructed gross area shall not exceed 110% of the space allocation set forth in this document to accommodate site, construction, climatic and/or environmental factors. A smaller overall gross area is permissible provided all established net area program requirements are met. Deviations shall be coordinated with the COS at CEHNC and the HQ IMCOM G9 CYS Facilities Team.

16. TOILET FIXTURE & GRAB BAR SCHEDULE.

DESCRIPTION:	CDC (0-5) - CHILD HEIGHT:	ADULT:
Water Closet (Toilet): ABA, floor mounted	Infants: Not Applicable Preschool: 10"-11" (254 mm to 279 mm) AFF to rim	17" (430 mm) min to 19" (485 mm) max AFF to seat
ABA dimension centerline of WC to wall	Infants: Not Applicable Preschool: 12" min - 15" (305 to 380 mm) max	16" (405 mm) min to 18" (455 mm) max
Water Closet (Toilet): Non-ABA, floor mounted	Infants: 10"-11" (254 to 279 mm) AFF to rim Preschool: 13"-14" (330 to 355mm) to rim	Typical Industry Standard
Water Closet (Toilet): Isolation Toilet, floor mounted	15" (380 mm) AFF to rim	Not Applicable
Lavatory (Handsink): ABA, wall hung	Infants: Not Applicable Preschool: 20" (508mm) AFF to rim	34" (865 mm) max AFF to rim
Lavatory (Handsink): Non-ABA, wall hung	Infants: 17" (430mm) AFF to rim Preschool: 20" (508mm) AFF to rim Isolation: 20" (508mm) AFF to rim	Typical Industry Standard
Drinking Fountain (within Activity Rooms and Corridors) *	Infants: 17" (430mm) AFF to rim Preschool: 22 " (559mm) AFF to rim	Not Applicable
Electric Water Cooler (EWC) – ABA	Not Applicable	36" (915 mm) max AFF to spout and a 38" (965 mm) to 43" (1090 mm) AFF to spout (for standing persons) (Min one of each req'd; If >2, 50% of each req'd)
Grab Bars in ABA stalls & rooms Grab bars req'd on rear & adjacent wall	Infants: Not Applicable Preschool: 20"- 25" (508 to 635 mm) AFF to top Isolation: 25" (635 mm) AFF to top	33" (840 mm) min to 36" (915 mm) max AFF to top
NOTES:		
<ol style="list-style-type: none"> 1. ABA requirements based upon ABA Accessibility Standard for Department of Defense Facilities, adopted Oct, 2008. 2. ABA requires only one (1) plumbing fixture of each type in every toilet room to comply with ABA. All other fixtures comply with Army Standards. 3. CDC standards are based upon The Army Standard for Child Development Centers for Children Ages 6 weeks to 5 years. 4. Dimension (AFF) variations are acceptable within typical construction tolerances. 		
* Drinking fountains outside of the Active Playrooms shall be mounted 20" (508mm) AFF to the rim.		

17. TOILET ACCESSORY SCHEDULE.

FIXTURE TYPE	ADULT TOILETS & LAVATORIES	ACTIVITY ROOM CHILD TOILETS	ACTIVITY ROOM LAVATORIES (Hand sinks)	DIAPER CHANGING STATIONS	FOOD PREP SINKS	ISOLATION AREA TOILET
Mirror+	X		X			X
Paper Towel Dispenser*	X		X	X	X	X
Trash Receptacle (user provided)	X		X	X	X	X
Soap Dispenser*	X		User provided retail pump soap	User provided retail pump soap	X	X
ABA Exposed Piping Covering	X	X	X			X
Coat Hook	X					
Toilet Tissue Dispenser*	X	X				X
ABA Grab Bars	X	X Preschool Toilets only at Child ABA height				X at Child ABA height

* Soap, toilet paper and paper towel dispensers – coordinate with the installation and provide in accordance with the service contract. Store bought soap in pump bottles to be used in child activity rooms.
 + Mirrors in most areas must be a tempered safety glass mirror, with stainless steel surround, including clear film applied to mirrored surface to retain glass pieces, if somehow the tempered mirror is cracked accidentally. Provide one (1) mirror above each lavatory.

18. HARDWARE SETS.

a. Office Lockset (F82B) - key lock from outside to lock/unlock outside handle, always open from the inside with turn button to lock outside handle, turn button releases automatically:

- a) Isolation Toilet
- b) Offices
- c) Training Room
- d) Staff Lounge
- e) Dry Storage
- f) Adult Toilets in Waiting area with occupancy indicator as shown below

b. Classroom Lockset: (F84) - key lock from outside to lock/unlock outside handle, always open from the inside:

- a) Kitchen Entry
- b) Exterior Storage Rooms
- c) Training Storage

c. Storage Lockset (F86) - key lock from outside, outside lever always locked, always open from the inside:

- a) Corridor Staff Toilets with occupancy indicator as shown below
- b) Nursing Mother's Room with occupancy indicator as shown below
- c) Laundry
- d) Janitor's Closet
- e) Storage Rooms in Activity Rooms
- f) Admin Storage
- g) Recycling Room
- h) VSS Equipment Room
- i) Mechanical, Electrical, and Communication Rooms (unless installation requirements differ).

d. Intruder Classroom (F110) - key lock from outside or inside lever locks/unlocks outside lever, always open from the inside:

- a) Activity Room Entries
- b) Active Play Entry
- c) Transitional Care Entry

Notes: All exterior doors shall be provided with hardware on the exterior side that allows for re-entry. All exterior exit doors shall have full-width push pad panic hardware. Front entry doors are as defined in the vestibule or entry space.



*Example of occupancy indicator only.

C. INDIVIDUAL SPACE REQUIREMENTS

1. SPACE: Vestibule. The following criteria is in addition to the General Requirements provided above.

a. FUNCTIONAL DESCRIPTION. Minimize mechanical air transfer of high traffic doors. Flooring serves to promote cleanliness by removing excess dirt from shoes. High traffic area for patrons with strollers, etc.

b. ADJACENCIES. Entry shall be on direct path from parking and drop-off areas. The entry shall have direct visual contact with the reception desk for access control.

c. OCCUPANTS. CDC users. Staff, children, parents and visitors.

d. FLOOR and BASE. Salient characteristics include easy to clean, durable (able to withstand wet and dirty conditions), easily repairable, and easy to maintain. Flooring shall be non-slip. A base material, appropriate for the flooring material used, is required. A LEED-compliant walk-off mat is required.

e. CEILING. Salient characteristics include resistance to environmental conditions, such as changes in air pressure and high humidity, and shall be durable.

f. DOORS/FRAME. Two (2) sets of storefront double 3 foot (0.9m) by 7 foot (2.1m) doors, with full-width push pad panic hardware, shall be provided on the outside and inside of the entry vestibule. To ensure maximum visibility, doors shall be fully glazed (with tempered glass) and have laminated glass to meet AFTP requirements. Doors shall be provided with self-closing devices. Discussion regarding additional facility physical deterrents is encouraged.

g. SPECIAL HARDWARE AND ELECTRICAL REQUIREMENTS.

a) Provide an ABA compliant buzzer type access system at the inner entry set of doors including following features:

- i. Buzzer that sounds at reception desk.
- ii. Intercom system for communication between reception desk and Vestibule.
- iii. Electronic lock system.

b) Features of electronic lock system shall include:

- i. Control of access into facility at reception desk.
- ii. Manual override of electronic lock by key from the outside.
- iii. Manual override to allow the doors to unlock from the interior.
- iv. "Tell-Tale" light to indicate if doors are locked or unlocked

c) Ensure the locking mechanism does not negate the use of the panic hardware during emergency evacuation. The fire department shall be provided with a key to the manual override.

h. AUTOMATIC DOOR OPERATORS: Provide ABA approved automatic door operators at outer and inner doors for handicapped accessibility. The automatic door operators at inner door shall be interlocked with Buzzer Access System controls.

2. SPACE: Waiting Area. The following criteria is in addition to the General Requirements provided above.

- a. FUNCTIONAL DESCRIPTION.** A waiting area for parents, children, and visitors. High traffic area for patrons with strollers, etc. Provides an area for seating.
- b. ADJACENCIES.** Shall be adjacent to the central reception desk and the entry. Shall also have direct access to the Public and Staff Toilets.
- c. OCCUPANTS.** Parents, children, and visitors.
- d. WALLS.** Wall material shall have the ability to absorb pushpins. Wall surface shall be able to withstand tape peeling.
- e. CEILING.** A “designer” ceiling system may be used in this area.
- f. EXTERIOR WINDOWS.** Provide at least 1 exterior window in a small facility, and at least 2 exterior windows in a medium or large facility.
- g. PLUMBING.** Provide a total of 2 EWCs, one (1) EWC mounted for adult ABA standing height, and one (1) EWC mounted for an ABA forward approach. See the Toilet Fixture and Grab Bar Schedule above.
- h. ELECTRICAL.** Provide lighting with dimming (continuous, flicker-free dimming from 100% to 10%) or a multilevel switching scheme (with one inboard lamp switched separately from outboard lamps to provide distinct, evenly distributed lighting levels.) A minimum of 1 (one) electrical outlet per wall is required.

3. SPACE: Central Counter/Reception Area. The following criteria is in addition to the General Requirements provided above.

- a. FUNCTIONAL DESCRIPTION.** The main access control point with direct visual contact with the entry, waiting area, and public toilets. This area will view/observe the flow of children, parents, and visitors. Patrons will sign in/out. Payments are received at the desk. Location of central intercom system, along with the location of the front (entry) door buzzer and electronic lock release. The central intercom system shall be able to contact each room individually and also shall be able to contact all rooms at one time. A duress alarm shall be provided, which must alert the MP station. The desk provides direct line of sight of the isolation area and toilet. Shall accommodate computers, printers, fax machine, copier, etc.
- b. ADJACENCIES.** Adjacent to waiting area and entry. Shall have direct visual control of the entry. Shall have direct visual and physical access to the Isolation Area and Isolation Toilet. Shall have direct, controllable access to corridor. A general office storage room shall be accessible from this area.
- c. OCCUPANTS.** CDC Staff
- d. WALLS.** Wall surface shall have the ability to absorb pushpins and to withstand tape peeling.
- e. CEILING.** A “designer” ceiling system may be used in this area.

f. DOORS/FRAME. Counter height swing gates are required. Gates to match reception desk in finish and material. Swing of gate shall not interfere with corridor traffic. At least one of the gates shall swing open 90 degrees minimum in both directions and shall be ABA compliant.

g. CABINET CONSTRUCTION. Countertop and cabinet construction shall comply with General Cabinetry in Section 4 (Architectural) of General Requirements above. Countertops shall be provided at two levels, 30" (762mm) and 42" (1066mm) above the floor. Work surfaces behind countertops shall be at standard working height and shall allow for mobile pedestals to be placed under the work surface. Do not provide built-in pedestals or drawers other than pencil drawers noted below. Countertop shall be appropriate as a writing surface. Two (2) equally spaced grommets with covers shall be provided in each of the raised counter areas. Grommets with covers are to be provided in the lower counter area directly below the grommets in the upper counter. In addition, one (1) grommet with cover shall be provided in the lower counter on the side where no upper counter is provided. One (1) pencil drawer shall be built-in in the small facility, and two (2) pencil drawers shall be provided in the medium and large facility. Area between upper and lower work surfaces shall be closed.

h. ELECTRICAL. A minimum of 3 quad outlets shall be provided in the small, 5 quad outlets in the medium and large. In addition, a duplex outlet shall be provided in each area with the raised counter for convenience. A minimum of 3 data outlets shall be provided in the small, and 5 in the medium and large – confirm number needed to accommodate all data requirements, to include point of sale (POS) devices. These electrical and data outlets shall be located evenly spaced along the reception counter and are in addition to the wall outlets required by code. If outlets are provided on the wall opposite of the reception desk, in the public area, these outlets shall be mounted 48" (1220mm) above finished floor. Location of data and electrical outlets to be coordinated with grommets for functionality.

i. SPECIAL REQUIREMENTS.

a) Reception desk shall be delineated through the use of special lighting and architectural features, such as fur-downs, etc. Furr-down shall be no lower than 7'-0" (2.1m).

b) An intercom system shall be provided with the buzzer to allow communication with the entry vestibule.

c) A duress alarm must be provided – provide conduit, cabling, electrical, and the capability to tie directly into the MP station with a silent activation button discreetly located under the lower countertop. Ensure any other buttons, such as the button to open the door, is not located near the duress button to avoid false alarms. Recommend coordination with Garrison to confirm requirements for tie-in to the Directorate of Emergency Services (DES) system.

d) Locate the manual emergency HVAC system shut-off button, with a non-locking protective cover, on the wall behind the Reception desk.

e) Locate a pull station for the fire alarm on the wall behind the Reception desk.

f) Ensure that there is an emergency light provided over the reception desk to provide lighting during electrical outages.

g) The VSS Parental Viewing Monitor (PVM) shall be mounted so that it is visible from the reception desk. The corresponding VSS PVM outlet shall be located as required in Section 7 (Security & Monitoring) of the General Information section above.

4. SPACE: Admin Storage. The following criteria is in addition to the General Requirements provided above.

- a. FUNCTIONAL DESCRIPTION.** General storage for office supplies and other supplies.
- b. ADJACENCIES.** Located adjacent to the Reception Desk. Other storage rooms shall be adjacent to the areas they serve (such as Training Room, etc.)
- c. OCCUPANTS.** CDC Staff
- d. SPECIAL REQUIREMENTS.** Provide a minimum of four (4) adjustable minimum 12” (305mm) deep shelves with heavy duty standards and brackets on as many walls of the storage room as possible while maintaining adequate circulation space. Shelving shall be able to support 100 pounds per lineal foot.
 - a)** On all walls where shelving is provided, a red line must be provided in accordance with Storage Height Limitation Line requirements in section 7. Fire Protection of the General Requirements above.
 - b)** The closet must be no smaller than 5'-0” (1.5m) in either direction to allow for an ABA 60” (1525mm) diameter turning circle.

5. SPACE: Isolation Area. The following criteria is in addition to the General Requirements provided above.

- a. FUNCTIONAL DESCRIPTION.** Serves as a rest area for sick children. Sufficient space for a child’s cot (approximately 52” (1321mm) wide x 22” (559mm) deep) will be provided in this area for the child.
- b. ADJACENCIES.** Shall be adjacent to the Isolation Toilet and the Reception Desk. Shall be within direct observation of the reception area staff. No door shall be provided between the Isolation Area and the Reception Desk.
- c. OCCUPANTS.** Sick child and 1 staff.
- d. FLOOR and BASE.** Base shall be seamless except at inside corners. Base shall be sealed to floor with USDA or NSF approved caulking.
- e. WALLS.** Wall surface shall have the ability to absorb pushpins and to withstand tape peeling.
- f. CABINETRY.** Cabinet construction shall comply with General Cabinetry in Section 4 (Architectural) of General Requirements above. Provide a handwashing sink in base cabinetry and a lockable wall cabinet for first aid supplies.
- g. ELECTRICAL.** Provide an electrical outlet and space for a 1.7 – 2.0 cu. ft. refrigerator (provided by others) for medication underneath the lockable wall cabinet.

6. SPACE: Isolation Area Toilet. The following criteria is in addition to the General Requirements provided above.

- a. **FUNCTIONAL DESCRIPTION.** ABA compliant toilet room for use by sick children. This toilet may also be used by the adult staff. Surfaces will be subjected to strong disinfectants on occasion.
- b. **ADJACENCIES.** Shall be adjacent to the Isolation Area.
- c. **OCCUPANTS.** Sick child and staff.
- d. **FLOOR and BASE.** Flooring shall be slip resistant.
- e. **WALLS.** Salient characteristics include shall be easy to clean and maintain, and shall be durable. On all walls, a minimum 48" (1220mm) tall ceramic or porcelain tile wainscot is required.
- f. **CEILING.** Salient characteristics include ease of accessibility to mechanical system above ceiling, durable, and free of sags or other defects.
- g. **DOOR.** Provide 3 foot (0.9m) by 7 foot (2.1m) stained solid core wood door, with a roll-type finger guard up to a minimum height of 48" (1220mm) and no vision panel.
- h. **HVAC.** Local exhaust fan, providing minimum 150 cubic feet per minute, shall be provided directly over the toilet area.
- i. **PLUMBING.** Provide a single occupant child height ABA wall-mounted lavatory (20" (508mm) to rim) and floor-mounted water closet (15" (380mm) to rim) with child height grab bars. The water closet and lavatory pairing of sizes in this area is unique to the building. Room shall be provided with a floor drain. Due to the limited use of this space, floor drain shall have a self-priming trap, or designed to prevent sewer gases from entering the occupied space by a proven and maintenance-free design.
- j. **ELECTRICAL.** Provide 1 (one) GFI outlet near the lavatory. Outlet shall be mounted 48" (1220mm) above the finish floor.

7. SPACE: Administrative Offices. The following criteria is in addition to the General Requirements provided above.

- a. **FUNCTIONAL DESCRIPTION.** Offices for the CDC management staff. Includes a private office for the CDC Director, a private office for the CDC Assistant Director(s), a workspace/storage area for the Motor Vehicle Operator (MVO), a Flex Space (a private office space available to be "signed out" by staff for private conversations and consultations) and an open office area.
- b. **ADJACENCIES.** Shall be adjacent to the Waiting Area and Reception Desk.
- c. **OCCUPANTS.** CDC staff.
- d. **WALLS.** Wall material shall have the ability to absorb pushpins. Wall surface shall be able to withstand tape peeling.
- e. **DOORS/FRAME.** Doors shall be provided with a minimum 12" (305mm) wide sidelite. Doors opening into corridor as well as the door connecting the Open Office Area to the Waiting Area must be provided with self-closing devices.

f. ELECTRICAL. Multiple electrical and voice/data outlets spaced 5' (1.5m) apart to be provided in all administrative offices/open office area to accommodate computers and other office equipment, in addition to potentially providing office space for more than 1 person. Provide an intercom in each office and in the open office area. A VSS monitor will also be located in the Director's office.

g. SPECIAL REQUIREMENTS. Provide shelving on 1 wall of the MVO workspace. A minimum of three (3) adjustable shelves with heavy-duty standards and brackets will be provided. At least one (1) 18" (457mm) deep shelf and two (2) 12" (305mm) deep shelves shall be provided. Shelving shall be able to support 100 pounds per lineal foot.

a) On all walls where shelving is provided, a red line must be provided in accordance with Storage Height Limitation Line requirements in section 7. Fire Protection of the General Requirements above.

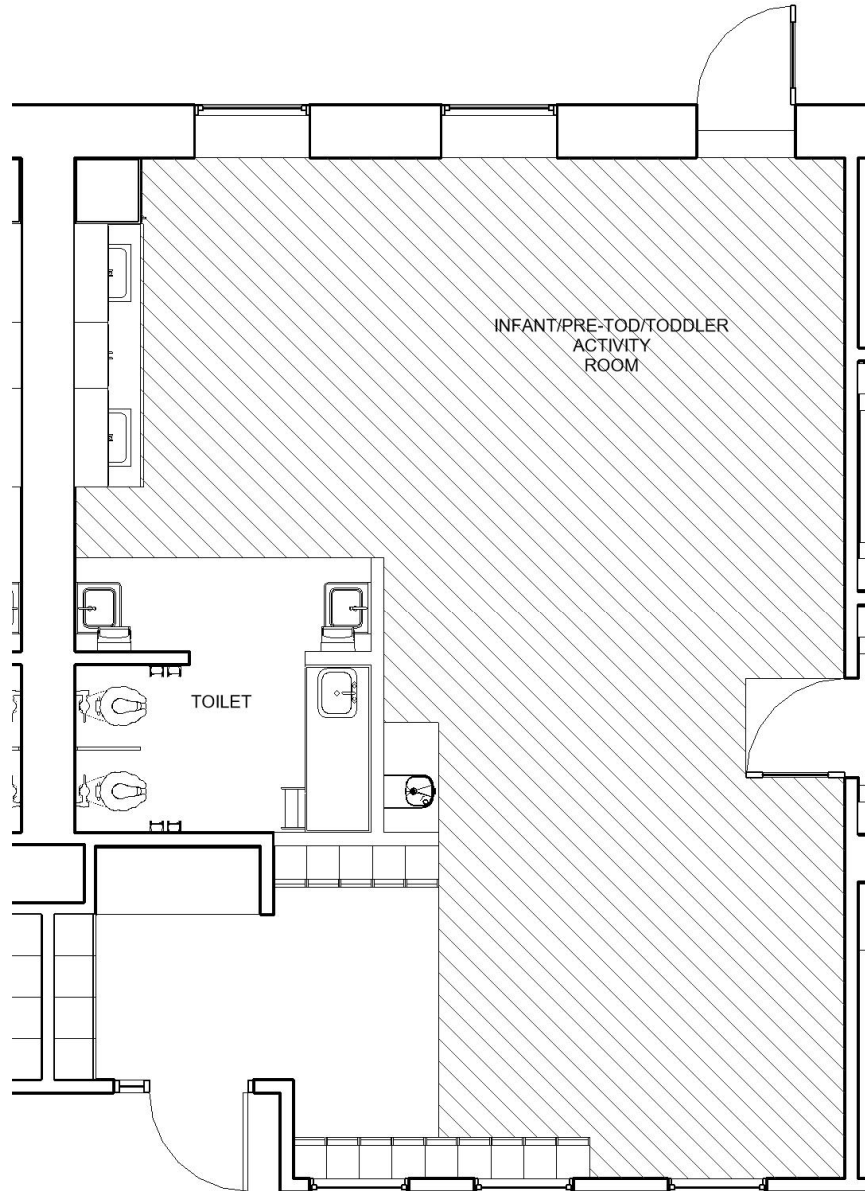
8. SPACE: Infant/Pre-Tod/Toddler Activity Room. The following criteria is in addition to the General Requirements provided above.

a. FUNCTIONAL DESCRIPTION. Activity Room which functions for childcare that includes eating, sleeping, playing, and other activities.

b. ADJACENCIES. Shall be adjacent to the corridor and shall have direct access to the exterior. Shall have direct access to storage room. Access to an age-appropriate playground must be provided.

c. OCCUPANTS. Two (2) Program Assistants and a maximum of 14 Children (depending upon age of children).

d. MINIMUM AREA. (See Section 16. Net Areas and Total Gross Building Area Chart above). Program Area may not be any less than 490 SF. Program area is area that can be used for children's activities. Areas such as circulation cannot be counted as program area. See drawing below for calculation of Program Area. Hatched area indicates portions of room that can be included in the minimum Program Area. Program area is calculated differently than net area or gross area.



Infant/Pre-Tod/Toddler Activity Room Net Program Area
Crosshatched Area

e. FLOOR and BASE. Base shall be seamless except at inside corners. Base shall be sealed to floor with USDA or NSF approved caulking.

f. WALLS. Wall material shall have the ability to absorb pushpins. Wall surface shall be able to withstand tape peeling. Where drinking fountains and/or lavatories are provided within the Activity Room space, a minimum 48" (1220mm) tall or to the bottom of the cap on the wing wall, whichever is higher, wainscot that is impervious to water and able to withstand

daily sanitizing is required. This material shall extend to the floor and at least 18" (457mm) horizontally in both directions from the centerline of the equipment. As illustrated, the walls around the toileting area shall be 4'-2" (1270mm) tall max.

g. DOORS/FRAME. All doors shall be provided with finger guards at the hinges, on the Activity Room side, up to a minimum height of 48" (1220mm). Finger guard shall be roll type. On exterior doors, finger guards shall not conflict with weather stripping. Interior doors shall be a minimum of half-height glass, with a clear width opening of 32" (812mm) and shall be provided with a 12-inch (305mm) wide sidelite on the latch side of the door. Exterior door shall be provided with full-width push pad panic hardware, shall be provided with self-closing device, shall have a clear width opening of 32" (812mm), open at least 110 degrees and have a low-profile threshold to ensure ease of crib emergency evacuation, and exit directly onto the outdoor play space. Exterior door shall be provided with a hold-open device as part of the self-closing device. Exterior doors shall be a minimum of half-height glass. Interior and exterior doors shall swing in the direction of exit travel.

h. EXTERIOR WINDOWS. Provide at least two (2) exterior windows.

i. VISION PANELS/VIEW WINDOWS. At least one (1) view window must be provided between this activity space and the corridor. In addition, not less than two (2) vision panels must be provided between this activity space and the corridor.

j. CABINETRY. Countertop and cabinet construction shall comply with General Cabinetry in Section 4 (Architectural) of General Requirements above. Provide the following:

a) A 5' (1.5m) wide sign-in desk with solid surface countertop and integral backsplash. Provide two (2) lockable, 24" (610mm) deep desk drawers and one (1) 2' (0.6m) wide base cabinet beneath the counter with recessed, flush mount drawer pulls. Drawers keyed to match doors in Food Prep/Arts and Crafts cabinetry. Electrical outlets and phone/data ports to be located above the counter. Refer to SD illustrations.

b) Provide 3 or 4 units of half-height, "z-locker", lockable wall lockers, with sloped tops secured to the wall, with a minimum size of 15" (381mm) x 15" (381mm) in the sign-in desk area. Each locker unit shall be 72" (1829mm) H. Lockers shall be sealed to the adjacent walls and floor. Z-lockers shall be lockable with individual padlocks, not with combination, keypad or keyed locks.

c) 8' (2.4m) wide base and wall cabinets with 2 stainless steel sinks plus a full height cabinet with adjustable shelves. Sinks shall be separated as much as possible and shall be provided with gooseneck faucets. Sink bowls shall be a minimum of 21" (533mm) W x 15-3/4" (400mm) D x 8" (203mm) H. Space shall be provided for an under-counter refrigerator. Consider providing two (2) – 36" (915 mm) W base cabinets with a 2' (0.6m) space between for the refrigerator. Base cabinets shall be lockable and may not have a protruding handle. All base cabinets in the facility shall be keyed alike. Refer to SD illustrations.

d) 14 pre-school cubbies, 12" (305mm) wide x 15" (381mm) deep x 48" (1220mm) tall permanently attached to walls (pre-manufactured). Provide upper shelf for hats and gloves and an open area at the base for boots and shoes and two (2) coat hooks in the middle section. Refer to illustrations under General Requirements above. Provided by Building Contractor.

k. ELECTRICAL. All electrical outlets, except for those mounted above countertops, shall be mounted 48" (1220mm) above the finish floor. Outlets provided above countertops shall be located no less than 18" (457mm) from the edge of the countertop. Two (2) electrical

outlets to be provided above the backsplash (food preparation/art counter/sink), one (1) over each open counter area. Electrical outlet to be provided for under the counter refrigerator. Electrical outlet, data port, intercom, and phone connection at sign in desk to be provided. Provide task lighting at sign in desk. A minimum of 1 (one) outlet will be provided above the cubbies in the program area and will be mounted between the vision panels. A minimum of 3 (three) duplex outlets will be installed, evenly spaced, on the exterior wall and the wall opposite the toilet area. In addition, provide 2 (two) voice/data outlets in the activity area. GFI outlets shall be provided where required by Code.

a) Provide lighting with dimming (continuous, flicker-free dimming from 100% to 10%) or a multilevel switching scheme (with one inboard lamp switched separately from outboard lamps to provide distinct, evenly distributed lighting levels.) Lighting within the child activity rooms must; sign-in desk and toilet be zoned together; and either an additional 2 zones or lamp control within the activity space, to allow different lighting levels for nap time and activity times. A minimum of 0.1 lumen/square foot must be maintained in the activity room to allow for camera operation.

b) In rooms where cribs will be located, electrical outlets shall be provided and shall be wired for future receptacles but will be provided with blank outlet plates. This will be coordinated with the users during design. The receptacles shall be provided to the building users.

c) Intercom device and telephone required as described in the General Requirements above.

I. **PLUMBING.** A drinking fountain is required on the wall outside the toilet area, mounted 17" (430mm) AFF to the rim. Plumbing for toilet/lavatory area, diaper changing table, and food preparation/art counter/sink area is also required.

m. **SPECIAL REQUIREMENTS.** Provide wall mounted emergency bag (backpack) hooks screwed into the structure at exterior doors at 6'-0" (1.8m) AFF.

9. SPACE: Infant/Pre-Tod/Toddler Storage Room. The following criteria is in addition to the General Requirements provided above.

a. **FUNCTIONAL DESCRIPTION.** Storage room to support the Infant/Pre-Tod/Toddler Activity Room.

b. **ADJACENCIES.** Shall be directly accessible from the Activity Room

c. **OCCUPANTS.** CDC Staff.

d. **ELECTRICAL.** A minimum of 1 (one) electrical outlet is required.

e. **LIGHTING.** Lighting shall be manually controlled by a manual switch within the room.

f. **SPECIAL REQUIREMENTS.** Shelving shall be provided on 3 walls. A minimum of four (4) adjustable shelves with heavy-duty standards and brackets will be provided on each wall. At least one (1) 18" (457mm) deep shelf and two (2) 12" (305mm) deep shelves shall be provided on each wall. Shelving shall be able to support 100 pounds per lineal foot.

a) On all walls where shelving is provided, a red line must be provided in accordance with Storage Height Limitation Line requirements in section 7. Fire Protection of the General Requirements above.

b) Dimensions of the room must accommodate an ABA 60" (1525mm) diameter turning circle. Adjustable shelves may encroach on this circle since they can be removed if necessary. Nothing else may encroach on the 5' (1.5m) circle.

10. SPACE: Infant/Pre-Tod/Toddler Toilet Area. The following criteria is in addition to the General Requirements provided above.

a. **FUNCTIONAL DESCRIPTION.** Toilet area for CDC children.

b. **ADJACENCIES.** Shall be directly accessible from the Activity Room

c. **OCCUPANTS.** CDC Children with staff assistance.

d. **FLOOR and BASE.** Flooring shall be slip resistant.

e. **WALLS:** On all walls, a minimum 48" (1220mm) tall or to the bottom of the cap on the wing wall, whichever is higher, ceramic or porcelain tile wainscot is required.

f. **TOILET PARTITIONS.** Top of toilet partitions shall be no higher than 42" tall with 12" (305mm) clear opening at bottom. Doors shall not be provided for these toilet stalls.

g. **PLUMBING.** Two (2) pediatric floor mounted water closets (10"-11" (254 to 279 mm) to rim), two (2) child wall mounted lavatories (17" (430mm) to rim) and the diaper changing station to be located as shown on the diagram. A floor drain is required in this area that shall have a self-priming trap or designed to prevent sewer gases from entering the occupied space by a proven and maintenance-free design. Provide toilet seats. Dual flush toilets are allowed; however, automatic flush valves are not allowed.

a) For the sinks in the toilet area (not the sinks in the food prep/arts and crafts area), faucets shall be pre-mixed single push control that meets ABA requirements. Water shall run for at least 15 - 20 seconds.

h. **HVAC.** Two (2) point exhausts, each providing minimum 150 cubic feet per minute. One shall be provided near toilets in the toilet area, and one located directly over the diaper changing station.

i. **ELECTRICAL.** No electrical receptacles are allowed in this area.

j. **SPECIAL REQUIREMENTS.** Mirrors required above each lavatory.

a) One (1) diaper changing station approximately 24" (610mm) deep x 60" (1525mm) long cabinet with sink integral to diaper changing surface, and retractable stairs with a handrail. Refer to 11. Diaper Changing Station under General Requirements. Provided by Building Contractor.

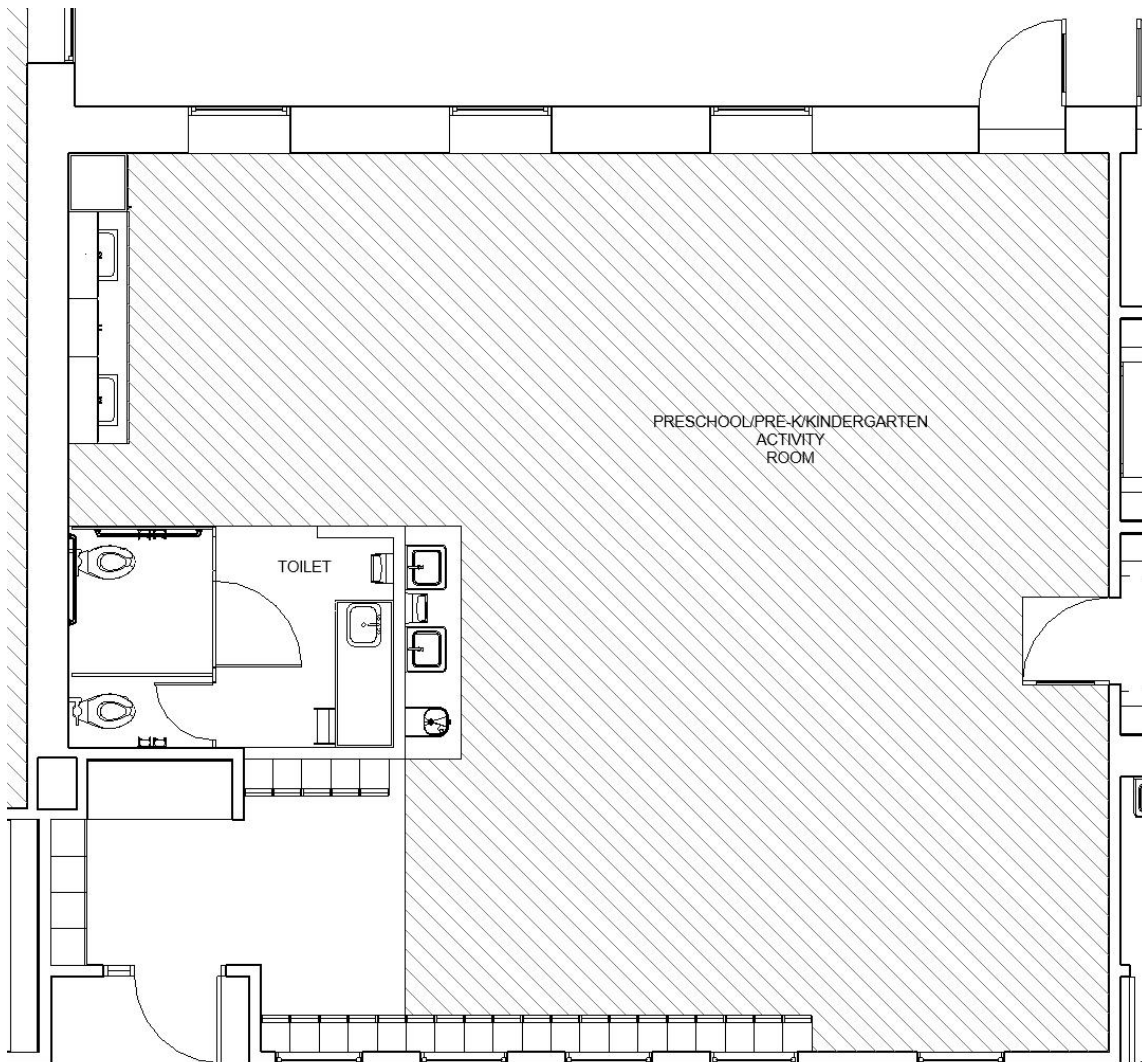
11. SPACE: Preschool/Pre-K/Kindergarten Activity Room. The following criteria is in addition to the General Requirements provided above.

a. FUNCTIONAL DESCRIPTION. Activity Room which functions for childcare, which includes eating, sleeping, playing, and other activities.

b. ADJACENCIES. Shall be adjacent to the corridor and shall have direct access to the exterior. Shall have direct access to storage room. Access to an age-appropriate playground must be provided.

c. OCCUPANTS. Two (2) Program Assistants and a maximum of 24 Children (depending upon age of children).

d. MINIMUM AREA. (See Section 16. Net Areas and Total Gross Building Area Chart above.) Program Area may not be any less than 840 SF. Program area is area that can be used for children’s activities. Areas such as circulation cannot be counted as program area. See drawing below for calculation of Program Area. Hatched area indicates portions of room that can be included in the minimum Program Area. Program area is calculated differently than net area or gross area.



Preschool/Pre-K/Kindergarten Activity Room Net Program Area **Crosshatched Area**

e. FLOOR and BASE. Base shall be seamless except at inside corners. Base shall be sealed to floor with USDA or NSF approved caulking.

f. WALLS. Wall material shall have the ability to absorb pushpins. Wall surface shall be able to withstand tape peeling. Where drinking fountains are provided within the Activity Room space, a minimum 48" (1220mm) or to the bottom of the cap on the wing wall, whichever is higher, tall wainscot that is impervious to water and able to withstand daily sanitizing is required. This material shall extend to the floor and at least 18" (457mm) horizontally in both directions from the centerline of the equipment. As illustrated below, the walls around the toileting area shall be 4'-2" (1270mm) tall max.

g. DOORS/FRAME. Doors shall be provided with finger guards at the hinges, on the Activity Room side, up to a minimum height of 48" (1220mm). On exterior doors, finger guards shall not conflict with weather stripping. Interior doors shall be a minimum of half-height glass, with a clear width opening of 32" (812mm) and shall be provided with a 12" (305mm) wide sidelite on the latch side of the door. Exterior door shall be provided with full-width push pad panic hardware, shall be provided with self-closing device, shall have a clear width opening of 32" (812mm), open at least 110 degrees and have a low-profile threshold to ensure ease of crib emergency evacuation, and exit directly onto the outdoor play space. Exterior door shall be provided with a hold-open device as part of the self-closing device. Exterior doors shall be a minimum of half-height glass. Interior and exterior doors shall swing in the direction of exit travel.

h. EXTERIOR WINDOWS. Provide at least (3) exterior windows.

i. VISION PANELS/VIEW WINDOWS. At least (1) view window must be provided between this activity space and the corridor. In addition, not less than (2) vision panels must be provided between this activity space and the corridor.

j. CABINETRY. Countertop and cabinet construction shall comply with General Cabinetry in Section 4 (Architectural) of General Requirements above. Provide the following:

a) A 5' (1.5m) wide sign-in desk with solid surface countertop and integral backsplash. Provide two (2) lockable, 24" (610mm) deep desk drawers and one (1) 2' (0.6m) wide base cabinet beneath the counter with recessed, flush mount drawer pulls. Drawers keyed to match doors in Food Prep/Arts and Crafts cabinetry. Electrical outlets and phone/data ports to be located above the counter. Refer to SD illustrations.

b) Provide 3 or 4 units of half-height, "z-locker", lockable wall lockers, with sloped tops secured to the wall, with a minimum size of 15" (381mm) x 15" (381mm) in the sign-in desk area. Each locker unit shall be 72" (1829mm) H. Lockers shall be sealed to the adjacent walls and floor. Z-lockers shall be lockable with individual padlocks, not with combination, keypad or keyed locks.

c) 8' (2.4m) wide base and wall cabinets with 2 stainless steel sinks plus a full height cabinet with adjustable shelves. Sinks shall be separated as much as possible and shall be provided with gooseneck faucets. Sink bowls shall be a minimum of 21" (533mm) W x 15-3/4" (400mm) D x 8" (203mm) H. Space shall be provided for an under-counter refrigerator. Consider providing 2 – 36" (915 mm) W base cabinets with a 2' (0.6m) space

between for the refrigerator. Base cabinets shall be lockable and may not have a protruding handle. All base cabinets in the facility shall be keyed alike. Refer to SD illustrations.

d) 24 pre-school cubbies, 12" (305mm) wide x 15" (381mm) deep x 48" (1220mm) tall permanently attached to walls (pre-manufactured). Provide upper shelf for hats and gloves and an open area at the base for boots and shoes and two (2) coat hooks in the middle section. Refer to illustrations under General Requirements above. Provided by Building Contractor.

k. ELECTRICAL. All electrical outlets, except for those mounted above countertops, shall be mounted 48" (1220mm) above the finish floor. Outlets provided above countertops shall be located no less than 18" (457mm) from the edge of the countertop. Two (2) electrical outlets to be provided above the backsplash (food preparation/art counter/sink), one (1) over each open counter area. Electrical outlet to be provided for under the counter refrigerator. Electrical outlet, data port, intercom, and phone connection at sign in desk to be provided. Provide task lighting at sign in desk. A minimum of two (2) outlets will be provided above the cubbies in the program area and will be mounted between the vision panels. A minimum of four (4) duplex outlets will be installed, evenly spaced, on the exterior wall and the wall opposite the toilet area. In addition, provide two (2) voice/data outlets in the activity area. GFI outlets shall be provided as required by Code.

a) Provide lighting with dimming (continuous, flicker-free dimming from 100% to 10%) or a multilevel switching scheme (with one inboard lamp switched separately from outboard lamps to provide distinct, evenly distributed lighting levels.) Lighting within the child activity rooms must; sign-in desk and toilet be zoned together; and either an additional 2 zones or lamp control within the activity space, to allow different lighting levels for nap time and activity times. A minimum of 0.1 lumen must be maintained in the activity room to allow for camera operation.

b) Intercom device and telephone required as described in the General Requirements above.

l. PLUMBING. A drinking fountain is required on the wall outside the toilet area, mounted 22" (533mm) AFF to the rim. Plumbing for toilet/lavatory area, diaper changing table, and food preparation/art counter/sink area is also required.

m. SPECIAL REQUIREMENTS. Provide wall mounted emergency bag (backpack) hooks screwed into the structure at exterior doors at 6'-0" (1.8m) AFF.

12. SPACE: Preschool/Pre-K/Kindergarten Storage Room. The following criteria is in addition to the General Requirements provided above.

a. FUNCTIONAL DESCRIPTION. Storage room to support the Preschool/Pre-K/Kindergarten Activity Room.

b. ADJACENCIES. Shall be directly accessible from the Activity Room.

c. OCCUPANTS. CDC Staff.

d. ELECTRICAL. A minimum of 1 (one) electrical outlet is required.

e. LIGHTING. Lighting shall be manually controlled by a manual switch within the room.

f. SPECIAL REQUIREMENTS. Shelving shall be provided on 3 walls. A minimum of four (4) adjustable shelves with heavy-duty standards and brackets will be provided on each wall. At least one (1) 18" (457mm) deep shelf and two (2) 12" (305mm) deep shelves shall be provided on each wall. Shelving shall be able to support 100 pounds per lineal foot.

a) On all walls where shelving is provided, a red line must be provided in accordance with Storage Height Limitation Line requirements in section 7. Fire Protection of the General Requirements above.

b) Dimensions of the room must accommodate an ABA 60" (1525mm) diameter turning circle. Adjustable shelves may encroach on this circle since they can be removed if necessary. Nothing else may encroach on the 5' (1.5m) circle.

13. SPACE: Preschool/Pre-K/Kindergarten Toilet Area. The following criteria is in addition to the General Requirements provided above.

a. FUNCTIONAL DESCRIPTION. Toilet area for CDC children.

b. ADJACENCIES. Shall be directly accessible from the Activity Room.

c. OCCUPANTS. CDC Children with staff assistance.

d. FLOOR and BASE. Flooring shall be slip resistant.

e. WALLS. On all walls, a minimum 48" (1220mm) tall or to the bottom of the cap on the wing wall, whichever is higher, ceramic or porcelain tile wainscot is required.

f. TOILET PARTITIONS. Top of toilet partitions shall be no higher than 48" (1220mm) tall with 12" (305mm) clear opening at bottom. Stall doors to be provided.

g. PLUMBING. Two (2) pediatric floor mounted water closets one (1) ABA and one (1) non-ABA (refer to Toilet Fixture and Grab Bar Schedule), two (2) child wall mounted lavatories (20" (508mm) to rim) and diaper changing station to be as shown in the SD. A floor drain is required in this area that shall have a self-priming trap or designed to prevent sewer gases from entering the occupied space by a proven and maintenance-free design. Provide toilet seats. Dual flush valve toilets are allowed; however, automatic flush valves are not allowed. For the sinks in the toilet area (not the sinks in the food prep/arts and crafts area), faucets shall be pre-mixed single push control that meets ABA requirements. Water shall run for at least 15 - 20 seconds.

h. HVAC. Two (2) point exhausts, each providing minimum 150 cubic feet per minute. One shall be provided near toilets in the toilet area, and one located directly over the diaper changing station.

i. ELECTRICAL. No electrical receptacles are allowed in this area.

j. SPECIAL REQUIREMENTS. Mirrors required above each lavatory. Mirrors shall be a tempered safety glass mirror, with stainless steel surround, including clear film applied to mirrored surface to retain glass pieces, if somehow the tempered mirror is cracked accidentally.

- a) One diaper changing station approximately 24" (610mm) deep x 60" (1525mm) long cabinet with sink integral to diaper changing surface, and retractable stairs with a handrail. Refer to 11. Diaper Changing Station under General Requirements. Provided by Building Contractor.
- b) One of the toilet stalls and one of the lavatories shall meet child ABA requirements.

14. SPACE: Buggy Storage. The following criteria is in addition to the General Requirements provided above.

- a. **FUNCTIONAL DESCRIPTION.** An alcove storage area to accommodate 2 infant "bye-bye" buggies. Buggies are approximately 76" (1930mm) by 26" (660mm).
- b. **ADJACENCIES.** Shall be directly accessible from the corridor and should be located near to the Infant/Pre-Tod/Toddler Rooms.
- c. **WALLS.** Salient characteristics include easy to clean, repairable, easy to maintain, and durable. In addition, vertical strips of wood, rubber, or other resilient material shall be placed 16" (405mm) apart, and attached to studs, shall be provided on all walls of this area. Strips shall be 3' (0.9m) tall and shall start at the top of the base. Strips to function as bye-bye buggy bumpers.
- d. **CEILING.** Salient characteristics include ease of accessibility to mechanical system above ceiling, durable, and shall provide an aesthetically pleasing surface, free of sags or other defects.
- e. **ELECTRICAL.** Lighting in this area shall be wired to the corridor light switch.

15. SPACE: Public and Staff Toilets. The following criteria is in addition to the General Requirements provided above.

- a. **FUNCTIONAL DESCRIPTION.** ABA compliant single occupant toilet rooms for staff, parents and visitors. Two (2) public toilet rooms will be provided in the waiting area of medium and large facilities.
- b. **ADJACENCIES.** Public toilets shall be located directly adjacent to the Waiting Area. Staff toilets shall be accessible from the corridors and shall be distributed throughout the facility.
- c. **WALLS.** Salient characteristics include shall be easy to clean and maintain, and shall be durable. On all walls, a minimum 48" (1220mm) tall wainscot is required that is impervious to water and be able to withstand daily sanitizing.
- d. **PLUMBING.** One (1) adult ABA compliant water closet, and one adult ABA compliant lavatory in each. A floor drain is required that shall have a self-priming trap or designed to prevent sewer gases from entering the occupied space by a proven and maintenance-free design.
- e. **HVAC.** Local exhaust fan, providing minimum 150 cubic feet per minute, shall be provided directly over the toilet. Exhaust fan shall be switched with the light.

f. ELECTRICAL. Ensure lighting is provided above the mirror. Provide 1 (one) GFI outlet near the lavatory at 48" (1220mm) AFF.

g. SPECIAL REQUIREMENTS. A wall-mounted fold-down diaper station shall be provided in each public toilet room adjacent to the Waiting Area. Adult height ABA grab bars shall be provided.

16. SPACE: Exterior Storage. The following criteria is in addition to the General Requirements provided above.

a. FUNCTIONAL DESCRIPTION. Store playground toys and equipment. Equipment that is stored in these rooms will often times be dirty and/or wet.

b. ADJACENCIES. Directly accessible from the exterior of the building. Shall be easily accessible from playground area.

c. FLOOR and BASE. Salient characteristics include easy to clean, durable (able to withstand wet and dirty conditions), such as sealed concrete. A base material, appropriate for the flooring material used, is required.

d. WALLS. Salient characteristics include easy to clean, repairable, easy to maintain, and durable. Design walls to avoid energy loss from the surrounding conditioned spaces.

e. CEILING. Salient characteristics include resistance to environmental conditions, such as changes in air pressure and high humidity, and shall be durable. Design the ceiling to avoid energy loss from the surrounding conditioned spaces.

f. DOORS/FRAME. Salient characteristics include easy to clean, able to withstand continuous use, and easy to maintain and repair. Each room to be provided with a pair of 3 foot (0.9m) by 7 foot (2.1m) doors, with each leaf provided with minimum of half-height glass panels. No astragals shall be provided. Instead, top and bottom flush bolts are to be provided on the inactive leaf. Adequate weather-stripping shall be provided to prevent access by vermin.

g. HVAC: Minimal conditioning of this space to be provided in extreme climates.

h. ELECTRICAL. Provide a minimum of 1 (one) outlet in each storage room.

i. Lighting shall be manually controlled by a switch within the room.

j. SPECIAL REQUIREMENTS. Four (4) adjustable shelves with heavy duty standards and brackets will be provided on the back wall. Shelves shall be a minimum of 18" (457mm) deep. Shelves shall be able to support 100 pounds per lineal foot.

a) On all walls where shelving is provided, a red line must be provided in accordance with Storage Height Limitation Line requirements in section 7. Fire Protection of the General Requirements above.

b) Dimensions of the room must accommodate an ABA 60" (1525mm) diameter turning circle. Adjustable shelves may encroach on this circle since they can be removed if necessary. Nothing else may encroach on the 5' (1.5m) circle.

17. SPACE: Janitor Closet. The following criteria is in addition to the General Requirements provided above.

- a. FUNCTIONAL DESCRIPTION.** Space to store janitor's equipment and cleaning supplies. Shelves are required within the Janitor's Closet in order to store janitorial and all cleaning products in a secure, locked janitor's closet away from areas where children's activities take place. SDS to be provided for all hazardous materials and approved by the local Preventive Medicine and Safety authority.
- b. ADJACENCIES.** Directly accessible from the corridor.
- c. WALLS.** Walls shall be able to withstand moving of mop buckets and other janitorial supplies and shall be able to resist damage due to moisture. Where the mop sink is located, a wainscot that is impervious to water and able to withstand daily sanitizing is required. This material shall extend at least 18" (457mm) horizontally in both directions past the edge of the equipment.
- d. CEILING.** Aluminum Acoustical Ceiling Grid with the size not exceeding 2' by 2' and supporting vinyl faced acoustical ceiling panels or painted gyp bd.
- e. DOORS/FRAME.** NFPA 101 no longer requires the door to this space to open 180 degrees into the corridor; a standard door swing of +/- 90 degrees is acceptable. Per the General Requirements above, door shall be provided with self-closing device.
- f. HVAC.** Local exhaust fan, providing minimum 150 cubic feet per minute, shall be provided.
- g. PLUMBING.** A janitor floor sink (mop basin) is required. Floor drain with self-priming trap is required in this area. Provide faucet with hose connection and vacuum breaker.
- h. ELECTRICAL.** A minimum of 1 (one) GFI electrical outlet is required.
- i. LIGHTING.** Lighting shall be manually controlled by a switch within the room.
- j. SPECIAL REQUIREMENTS.** Adjustable 12" (305mm) deep shelves with heavy duty standards and brackets will be provided on at least one wall. Shelves shall be able to support 100 pounds per lineal foot.
 - a)** On all walls where shelving is provided, a red line must be provided in accordance with Storage Height Limitation Line requirements in section 7. Fire Protection of the General Requirements above.
 - b)** Dimensions of the room must accommodate an ABA 60" (1525mm) diameter turning circle. Adjustable shelves may encroach on this circle since they can be removed if necessary. Nothing else may encroach on the 5' (1.5m) circle.
 - c)** Provide a wall-mounted rack, over the mop sink, for hanging mops.

18. SPACE: Stroller/Car Seat Area. The following criteria is in addition to the General Requirements provided above.

19. SPACE: Training Room. The following criteria is in addition to the General Requirements provided above.

- a. **FUNCTIONAL DESCRIPTION.** To facilitate training/distance learning by CDC staff.
- b. **ADJACENCIES.** Directly accessible from the corridor.
- c. **OCCUPANTS.** CDC staff. The Trainers will work in this space. Several workstations will be set up for others to come and train.
- d. **FLOOR and BASE.** Salient characteristics include: easy to clean, maintain, and repair.
- e. **WALLS.** Wall surface shall have the ability to absorb pushpins and to withstand tape peeling.
- f. **CEILING.** Salient characteristics include: ease of accessibility to mechanical system above ceiling, durable, and shall provide an aesthetically pleasing surface, free of sags or other defects. Shall have a minimum CAC rating of 40.
- g. **VISION PANELS.** Providing vision panels between the Training Room and the Corridor may be required by the local CYS leadership.
- h. **EXTERIOR WINDOWS.** Provide exterior windows as needed to meet daylighting requirements.
- i. **ELECTRICAL.** Electrical outlets, data ports, cable TV (CATV) outlets, phone lines, and intercom to be provided. A minimum of 8 (small facilities) and 12 (medium and large facilities) voice/data ports, and 6 quad-plex electrical outlets shall be provided, evenly spaced along the walls of the room. Provide outlets in the floor as needed to accommodate FF&E requirements.
- j. **LIGHTING.** Provide lighting with dimming (continuous, flicker-free dimming from 100% to 10%) or a multilevel switching scheme (with one inboard lamp switched separately from outboard lamps to provide distinct, evenly distributed lighting levels.)

20. SPACE: Training Room Storage. The following criteria is in addition to the General Requirements provided above.

- a. **FUNCTIONAL DESCRIPTION.** General storage for training materials and supplies.
- b. **ADJACENCIES.** Located adjacent to, and directly accessed from, the Training Room.
- c. **OCCUPANTS.** CDC Staff
- d. **ELECTRICAL.** Lighting shall be manually controlled by a switch within the room.
- e. **SPECIAL REQUIREMENTS.** Provide shelves on as many walls of the storage rooms as possible while maintaining adequate circulation space. A minimum of four (4) adjustable shelves with heavy duty standards and brackets will be provided on each wall. Shelving shall be minimum 12" (305mm) deep and shall be able to support 100 pounds per lineal foot.

a) On all walls where shelving is provided, a red line must be provided in accordance with Storage Height Limitation Line requirements in section 7. Fire Protection of the General Requirements above.

b) Dimensions of the room must accommodate an ABA 60" (1525mm) diameter turning circle. Adjustable shelves may encroach on this circle since they can be removed if necessary. Nothing else may encroach on the 5' (1.5m) circle.

21. SPACE: Staff Lounge. The following criteria is in addition to the General Requirements provided above.

a. **FUNCTIONAL DESCRIPTION.** Staff break area.

b. **ADJACENCIES.** Directly accessible from the corridor.

c. **OCCUPANTS.** CDC staff.

d. **WALLS.** Wall surface shall have the ability to absorb pushpins and to withstand tape peeling.

e. **CEILING.** Shall have a minimum CAC rating of 40.

f. **PLUMBING.** Provide hot and cold water for sink. Provide water line for icemaker in refrigerator.

g. **CABINETRY.** Countertop and cabinet construction shall comply with General Cabinetry in Section 4 (Architectural) of General Requirements above. A minimum 8' (2.4m) wide base and wall cabinets with one (1) stainless steel sink. Sink shall be a 22" (559mm) x 18" (457mm) ABA compliant sink with a goose neck faucet. Utensil drawers and cabinet doors do not require locks in this area.

Counters will be 34" (864mm) high. A 36" (915 mm) wide space shall be provided adjacent to counter for a refrigerator.

h. **ELECTRICAL.** Provide outlets above backsplash for home type appliances (coffee pot, microwave, etc.) in addition to receptacles required by the code. Provide outlet for refrigerator(s). Two (2) microwaves and two (2) refrigerators to be provided for Large facilities.

a) Electrical outlets, phone lines, cable TV outlets (CATV), and intercom to be provided. A minimum of 4 voice/data ports (1 per wall) shall be provided.

b) Provide GFI outlets for 1 or 2 vending machines, based on facility size.

c) Provide power and data for the time clock. Two (2) time clocks are needed for a large facility.

i. **LOCKERS.** Half-height, "z-locker", lockable (padlocks) wall lockers, with sloped tops secured to the wall, with a minimum size of 15" (381mm) x 15" (381mm), shall be provided in this area (total of 12 locker units in the small CDC, 18 locker units in the medium CDC, and 24 locker units in the large CDC). Each locker unit shall be 72" (1829mm) H. Lockers shall be sealed to the adjacent walls and floor. Z-lockers shall be lockable with individual padlocks, not with combination, keypad or keyed locks.

- j. **SPECIAL REQUIREMENTS.** Soap and paper towel dispensers to be coordinated with the installation and provided in accordance with the service contract.

22. SPACE: Central Storage. The following criteria is in addition to the General Requirements provided above.

- a. **FUNCTIONAL DESCRIPTION.** Space for storage of program material.
- b. **ADJACENCIES.** Directly accessible from the corridor.
- c. **DOORS/FRAME.** Salient characteristics include durability. Doors, frames, and hardware shall be able to withstand constant opening and closing. Doors shall be provided with self-closing devices. Door shall be fitted with a locking mechanism (See Chart above.) and lever type handle that allows the door to be opened from the inside while locked. Doors shall be a minimum of half-height glass.
- d. **ELECTRICAL.** Lighting shall be manually controlled by a switch within the room.
- e. **SPECIAL REQUIREMENTS.** Shelving shall be provided on at least 2 walls. Four (4) adjustable shelves with heavy-duty standards and brackets will be provided on each wall and shall consist of two (2) 18" (457mm) deep shelves and two (2) 12" (305mm) deep shelves. Shelving shall be able to support 100 pounds per lineal foot.
 - a) On all walls where shelving is provided, a red line must be provided in accordance with Storage Height Limitation Line requirements in section 7. Fire Protection of the General Requirements above.
 - b) Dimensions of the room must accommodate an ABA 60" (1525mm) diameter turning circle. Adjustable shelves may encroach on this circle since they can be removed if necessary. Nothing else may encroach on the 5' (1.5m) circle.

23. SPACE: VSS Equipment Room. The following criteria is in addition to the General Requirements provided above.

- a. **FUNCTIONAL DESCRIPTION.** VSS video monitoring system to deter and reduce the risk of child abuse and protect staff from unwarranted allegations of abuse. Room to accommodate the VSS System Equipment Rack (SER) for camera system throughout the facility.
- b. **ADJACENCIES.** Shall be directly accessible from the corridor.
- c. **OCCUPANTS.** Staff.
- d. **DOORS/FRAME.** Doors shall be a minimum of half-height glass.
- e. **HVAC.** Supply cool, conditioned air to space for general comfort and to protect the heat generating equipment. Ideal operating temperature of VSS Equipment Room is 68-72 degrees F. Add a minimum of 3 control points to the facility control system for monitoring to include: 1 room thermostat, 2 unit on/off, 3 supply temperature. Equipment must be shut down if ambient room temperature exceeds 78 degrees F for more than 1 (one) hour, or if equipment is reporting alarms (amber or red indicator lights on the server) due to overheating.

Coordinate with Department of Public Works when temperatures are not within the above standard.

f. ADDITIONAL INFORMATION. The building construction contractor provides the conduit, boxes and power (cabling) to every camera location. Refer to Section 8. Security and Monitoring – Video Surveillance System (VSS) of General Requirements for additional information.

24. SPACE: Kitchen. The following criteria is in addition to the General Requirements provided above.

a. FUNCTIONAL DESCRIPTION. Commercial grade facility designed for use by staff to meet the food service needs of children, 6 weeks to 5 years of age, in accordance with the United States Department of Agriculture and Preventive Medicine Regulations

b. ADJACENCIES. Directly accessible from the corridor. Direct access to exterior.

c. OCCUPANTS. CDC kitchen staff.

d. FLOOR and BASE. Salient characteristics include resistance to slipping, durable, non-porous and hard surface resistant to scrapes and stains and easy to clean. Alternatives to quarry tile must be submitted for approval prior to completion of design documents.

e. WALLS. Walls of all areas where food establishment operations are conducted shall be constructed to be light colored, durable, easily cleanable, non-absorbent and smooth. Mortar, and epoxy grout joint materials shall be waterproof, grease-proof, and erosion resistant. Water-resistant gypsum wallboard protected by a cement backerboard, or green board shall be used to sheath stud walls. Wall finish shall be full-height ceramic wall tile. Tile color shall be white or off-white with matching grout. All outside corners of interior walls shall be protected stainless steel corner protective guards extending at least 72" (1829mm) above the finished floor.

f. CEILING. Salient characteristics include easy to clean, ease of accessibility to mechanical system above ceiling, and ease of repair. Ceilings shall be aluminum acoustical ceiling grid, 2' by 2', supporting vinyl faced acoustical lay-in panels.

g. DOORS/FRAME. Hold-open devices of any kind (wedges, door stops, magnetic hold-open devices, etc.), shall not be used on any kitchen doors. Provide an automatic door opener on the (interior) kitchen door to facilitate cart delivery. Exterior door shall be minimum 40" (1016mm) wide. Doors shall be provided with self-closing devices.

h. AIR CURTAIN. Provide one (1) air curtain to control flying insects mounted on the inside wall above the exterior kitchen door. Air curtain shall be directed to blow pests away from building entrance. Air velocity, measured at 3' (0.9m) above the floor, shall be at least 1,600 fpm.

i. HVAC. Two (2) ventilation exhaust hoods are required. One (1) condensation hood over the dishwashing machine, and one (1) over the cooking equipment. Ensure adequate make up air is provided.

j. ELECTRICAL. In addition to electrical requirements for kitchen equipment, electrical outlet and voice/data port to be provided to accommodate a computer and phone in kitchen

for placing food orders on-line. Intercom device and telephone required as described in the General Requirements above. System shall be hands free and audible throughout entire space.

k. LIGHTING. Fluorescent and/or LED lighting that allows an accurate assessment of food coloration shall be provided.

l. PLUMBING. Hot and cold water shall be provided for 3 compartment ware washing sink, 2 compartment food preparation sinks, 2 each hand washing sinks, a cart washing area, dishwasher, convection steamers, 2 booster heaters, garbage grinder, and garbage disposal. Water shall be provided for a commercial icemaker. Floor drains with a self-priming trap, to include floor sinks, shall be provided.

a) A grease trap (interceptor) may not be required in a CDC facility as no grease is produced in the food prep and cooking operations. If required by the garrison or local municipality, size grease trap as small as possible. If provided, grease traps shall not be located inside the building without prior written approval of the MEDCEN/MEDDAC Commander. Grease traps must be located underground and shall not be located within the fenced area.

m. FIRE PROTECTION. Provide wet chemical fire suppression system and fire extinguisher for the commercial cooking equipment in accordance with UFC 3-600-01. The manual activation device for the wet chemical fire suppression system shall be on the path of egress and spaced a minimum of 10' (3m) and a maximum of 20' (6m) from the protected hood exhaust system. Smoke detectors shall not be provided for the kitchen. (NOTE: If the kitchen dry storage room is fully enclosed a smoke detector will be required.)

n. SPECIAL REQUIREMENTS. Kitchen plans and schedules are provided below. The kitchen may be flipped in plan if desired. See also Section 4 (Architectural) under General Requirements for more information on Kitchen Equipment and additional requirements.

a) Where shelving is provided, a red tile line must be provided in accordance with Storage Height Limitation Line requirements in section 6 of the General Information above.

b) A milk dispenser may be provided (Government Furnished, Government Installed) if desired by the Installation. It would be located on Work Table 11 (A11, B11, C11).

c) An acceptable option is to replace the Steamer and the Convection Oven with two (2) Combo-Ovens (which functions as both a steamer and a convection oven). In the plans and equipment lists below, these are items A20, A21, B20, B21, C20, C21.

SMALL KITCHEN EQUIPMENT LIST				
Item No.	Qty.	Description	Dimensions	Notes
A1	1	Air Curtain, Unheated		CFCI
A2	4	Shelving, Chrome Wire	18" x 36"	CFCI
A2	1	Shelving, Chrome Wire	18" x 42"	CFCI
A2	1	Shelving, Chrome Wire	18" x 48"	CFCI
A3	1	Freezer, 3 Section, Reach-in		CFCI
A4	1	Walk-in Refrigerator	8'-0"W x 7'-6"D x 8'-6"H	CFCI
A5	3	Shelving, Epoxy Wire	18" x 36"	CFCI
A5	1	Shelving, Epoxy Wire	24" x 36"	CFCI
A6	1	Dunnage Rack, Single Tier Milk Crate		CFCI
A7	1	Hand Sink, Food Prep		CFCI
A8	1	Mixer, 20QT, Floor		GFGI
A9	1	Stand, Mixer		
A10	1	Refrigerator, 1 Section, Reach-in		GFGI
A11	1	Table, Work w/ Under Shelf	30"W x 72"L x 36"H	CFCI
A13	1	Cart, 4 Shelf, Preschool		GFGI
A14	4	Cart, 3 Shelf, Toddler		GFGI
A15	2	Cart, 3 Shelf, Infant		GFGI
A17	1	Table, Work w/ Double Sink, Under Shelf	30"W x 72"L x 36"H	CFCI
A18	1	Elevated Shelf w/ Utensil Rack	22"W x 72"L x 7'-6"H	CFCI
A19	2	Table, Work w/ Drawers, Under Shelf	30"D x 72"L x 36"H	CFCI
A20	1	Oven, Single, Convection		CFCI
A21	1	Steamer, Electric, 1 Compartment, 3 Pan		CFCI
A22	1	Vent Hood, Type I, Face Discharge	13'-0"L x 4'-0"D x 2'-0"H	CFCI
A23	1	Fire Suppression System		CFCI
A24	1	Range, 6 Burner, STD Oven		CFCI
A26	1	Hand Sink, Ware Washing		CFCI
A28	2	Wall Shelf, SS Wire		CFCI
A29	1	Sink, 3 Compartment	10'-0"L x 2'-6"W x 2'-10"H	CFCI
A30	1	Rack, Aluminum, Pot & Pan		CFCI
A31	1	Dish Table, Clean	30"D x 84"L x 34"H	CFCI
A32	1	Booster Heater, Electric		CFCI
A33	1	Dish Machine, Tall, Single Rack		CFCI
A34	1	Condensate Hood, Type II	48"W x 42"D x 24"H	CFCI
A35	1	Undercounter Waste Barrel		GFGI
A36	1	Dish Table, Soiled, Corner	40" & 50" x 30"D x 34"H	CFCI
A37	1	Disposal, 1.5HP, Pre-rinse Spray		CFCI
A38	1	Hose Reel, Wall Mount		CFCI
A40	1	Ice Maker, SS		CFCI

MEDIUM KITCHEN EQUIPMENT LIST				
Item No.	Qty.	Description	Dimensions	Notes
B1	1	Air Curtain, Unheated		CFCI
B2	4	Shelving, Chrome Wire	18" x 36"	CFCI
B2	1	Shelving, Chrome Wire	18" x 42"	CFCI
B2	1	Shelving, Chrome Wire	18" x 48"	CFCI
B3	1	Walk-in Freezer	7'-6"W x 6'-10"D x 7'-6"H	CFCI
B4	1	Walk-in Refrigerator	7'-6"W x 6'-10"D x 7'-6"H	CFCI
B5	4	Shelving, Epoxy Wire	18" x 36"	CFCI
B6	3	Shelving, Epoxy Wire	24" x 36"	CFCI
B7	1	Dunnage Rack, Single Tier Milk Crate		CFCI
B8	1	Hand Sink, Food Prep		CFCI
B9	1	Mixer, 30QT, Floor		GFGI
B10	1	Refrigerator, 1 Section, Reach-in		GFGI
B11	1	Table, Work w/ Under Shelf	30"W x 72"L x 36"H	CFCI
B13	2	Cart, 4 Shelf, Preschool		GFGI
B14	8	Cart, 3 Shelf, Toddler		GFGI
B15	4	Cart, 3 Shelf, Infant		GFGI
B16	1	Table, Work w/ Drawers, Under Shelf	24"D x 96"L x 36"H	CFCI
B17	1	Table, Work w/ Double Sink, Under Shelf	30"W x 72"L x 36"H	CFCI
B18	1	Elevated Shelf w/ Utensil Rack	22"W x 72"L x 7'-6"H	CFCI
B19	1	Table, Work w/ Drawers, Under Shelf	30"D x 72"L x 36"H	CFCI
B20	1	Oven, Double, Convection		CFCI
B21	1	Steamer, Electric, 1 Compartment, 3 Pan		CFCI
B22	1	Vent Hood, Type I, Face Discharge	13'-0"L x 4'-0"D x 2'-0"H	CFCI
B23	1	Fire Suppression System		CFCI
B24	1	Range, 6 Burner, STD Oven		CFCI
B26	1	Hand Sink, Ware Washing		CFCI
B28	2	Wall Shelf, SS Wire		CFCI
B29	1	Sink, 3 Compartment	10'-0"L x 2'-6"W x 2'-10"H	CFCI
B30	1	Rack, Aluminum, Pot & Pan		CFCI
B31	1	Dish Table, Clean	30"D x 84"L x 34"H	CFCI
B32	1	Booster Heater, Electric		CFCI
B33	1	Dish Machine, Tall, Single Rack		CFCI
B34	1	Condensate Hood, Type II	48"W x 42"D x 24"H	CFCI
B35	1	Undercounter Waste Barrel		GFGI
B36	1	Dish Table, Soiled, Corner	40" & 50" x 30"D x 34"H	CFCI
B37	1	Disposal, 1.5HP, Pre-rinse Spray		CFCI
B38	1	Hose Reel, Wall Mount		CFCI
B39	1	Desk and Chair		GFGI
B40	1	Ice Maker, SS		CFCI

LARGE KITCHEN EQUIPMENT LIST				
Item No.	Qty.	Description	Dimensions	Notes
C1	1	Air Curtain, Unheated		CFCI
C2	4	Shelving, Chrome Wire	18" x 36"	CFCI
C2	1	Shelving, Chrome Wire	18" x 42"	CFCI
C2	1	Shelving, Chrome Wire	18" x 48"	CFCI
C3	1	Walk-in Freezer	7'-6"W x 6'-10"D x 7'-6"H	CFCI
C4	1	Walk-in Refrigerator	7'-6"W x 6'-10"D x 7'-6"H	CFCI
C5	2	Shelving, Epoxy Wire	18" x 36"	CFCI
C5	7	Shelving, Epoxy Wire	24" x 36"	CFCI
C6	1	Dunnage Rack, Single Tier Milk Crate		CFCI
C7	1	Hand Sink, Food Prep		CFCI
C8	1	Mixer, 30QT, Floor		GFGI
C10	1	Refrigerator, 1 Section, Reach-in		GFGI
C11	1	Table, Work w/ Under Shelf	30"W x 72"L x 36"H	CFCI
C13	3	Cart, 4 Shelf, Preschool		GFGI
C14	12	Cart, 3 Shelf, Toddler		GFGI
C15	6	Cart, 3 Shelf, Infant		GFGI
C16	1	Table, Work w/ Drawers, Under Shelf	24"D x 96"L x 36"H	CFCI
C17	1	Table, Work w/ Double Sink, Under Shelf	30"W x 72"L x 36"H	CFCI
C18	1	Elevated Shelf w/ Utensil Rack	22"W x 72"L x 7'-6"H	CFCI
C19	1	Table, Work w/ Drawers, Under Shelf	30"D x 72"L x 36"H	CFCI
C20	1	Oven, Double, Convection		CFCI
C21	1	Steamer, Electric, 1 Compartment, 3 Pan		CFCI
C22	1	Vent Hood, Type I, Face Discharge	13'-0"L x 4'-0"D x 2'-0"H	CFCI
C23	1	Fire Suppression System		CFCI
C24	1	Range, 8 Burner, STD Oven		CFCI
C26	1	Hand Sink, Ware Washing		CFCI
C28	2	Wall Shelf, SS Wire		CFCI
C29	1	Sink, 3 Compartment	10'-0"L x 2'-6"W x 2'-10"H	CFCI
C30	1	Rack, Aluminum, Pot & Pan		CFCI
C31	1	Dish Table, Clean	30"D x 84"L x 34"H	CFCI
C32	1	Booster Heater, Electric		CFCI
C33	1	Dish Machine, Tall, Single Rack		CFCI
C34	1	Condensate Hood, Type II	48"W x 42"D x 24"H	CFCI
C35	1	Undercounter Waste Barrel		GFGI
C36	1	Dish Table, Soiled, Corner	40" & 50" x 30"D x 34"H	CFCI
C37	1	Disposal, 1.5HP, Pre-rinse Spray		CFCI
C38	1	Hose Reel, Wall Mount		CFCI
C39	1	Desk and Chair		GFGI
C40	1	Ice Maker, SS		CFCI

24A. SPACE: Kitchen Dry Food Storage. The following criteria is in addition to the General Requirements provided above.

- a. FUNCTIONAL DESCRIPTION.** Storage for dry food goods. Located within a fully enclosed room and directly accessed from the Kitchen.
- b. OCCUPANTS.** Cook and Staff
- c. FLOOR and BASE.** Salient characteristics include resistance to slipping, durable, non-porous and hard surface resistant to scrapes and stains and easy to clean.
- d. WALLS.** Walls of all areas where food establishment operations are conducted shall be constructed to be light colored, durable, easily cleanable, non-absorbent and smooth. Mortar, and epoxy grout joint materials shall be waterproof, grease-proof, and erosion resistant. Water-resistant gypsum wallboard protected by a cement backerboard, or green board shall be used to sheath stud walls. Wall finish shall be full-height ceramic wall tile. Tile color shall be white or off-white with matching grout. All outside corners of interior walls shall be protected stainless steel corner protective guards extending at least 72" (1829mm) above the finished floor.
- e. CEILING.** Salient characteristics include easy to clean, ease of accessibility to mechanical system above ceiling, and ease of repair. Ceilings shall be aluminum acoustical ceiling grid, 2' by 2', supporting vinyl faced acoustical ceiling panels.
- f. DOORS/FRAME.** Door shall be provided with self-closing device.
- g. FIRE PROTECTION.** Provide smoke detectors in this area. (NOTE: If the storage room is not enclosed, then a smoke detector is not required.)
- h. SPECIAL REQUIREMENTS.** On all walls where shelving is to be provided, a red line must be provided in accordance with Storage Height Limitation Line requirements in section 7. Fire Protection of the General Requirements above.

25. SPACE: Laundry Room. The following criteria is in addition to the General Requirements provided above.

- a. FUNCTIONAL DESCRIPTION.** Area to launder and fold clothes and linens. Commercial grade, side by side laundry equipment to be CFCI. Area also serves as a space to store janitor's equipment and cleaning supplies. Shelves and cabinetry are required to store janitorial and cleaning products in a secure, locked area away from areas where children's activities take place. SDS to be provided for all hazardous materials and approved by the local Preventive Medicine and Safety authority.
- b. FLOOR and BASE.** Flooring shall be a quarry tile or other hard, durable, non-porous, non-slip surface. Alternatives to quarry tile must be submitted for approval prior to completion of design documents. An epoxy grout shall be used and shall be sealed or treated to avoid stains.
- c. WALLS.** Salient characteristics include easy to clean, repairable, easy to maintain, and durable. Walls shall be able to withstand the warm humid environment and shall be able to

withstand being bumped by laundry carts and mop buckets. Where the mop sink is located, a wainscot that is impervious to water and able to withstand daily sanitizing is required. This material shall extend at least 18" (457mm) horizontally in both directions past the edge of the equipment.

d. CEILING. Salient characteristics include easy to clean, ease of access to mechanical system above ceiling, moisture resistant, and easy to repair. Aluminum Acoustical Ceiling Grid with the size not exceeding 2' by 2' and supporting vinyl faced acoustical ceiling panels or painted gyp bd.

e. DOORS/FRAME. Frame, door, and hardware to have a 45-minute fire rating in accordance with NFPA 80. Both door and frame shall have proper label indicating rating. Per the General Requirements above, door shall be provided with self-closing device.

f. ELECTRICAL. Provide proper outlets for the number of washers and dryers specified: Small facilities will have 2 washers and 2 dryers. Medium facilities will have 3 washers and 3 dryers. Large facilities will have 4 washers and 4 dryers. A minimum of 1 (one) GFI electrical outlet is required. Install Intercom connection.

g. HVAC. Point exhaust, providing minimum 150 cubic feet per minute, shall be provided.

h. PLUMBING. Plumbing for laundry tub, floor sink, sink, and washers. A floor drain is required in this area that shall have a self-priming trap or designed to prevent sewer gases from entering the occupied space by a proven and maintenance-free design. A janitor floor sink (mop basin) and separate laundry tub are required. Provide faucet with hose connection and vacuum breaker. Laundry tub shall be a free-standing unit, minimum of 20" (508mm) x 20" (508mm) x 16" (405mm) deep.

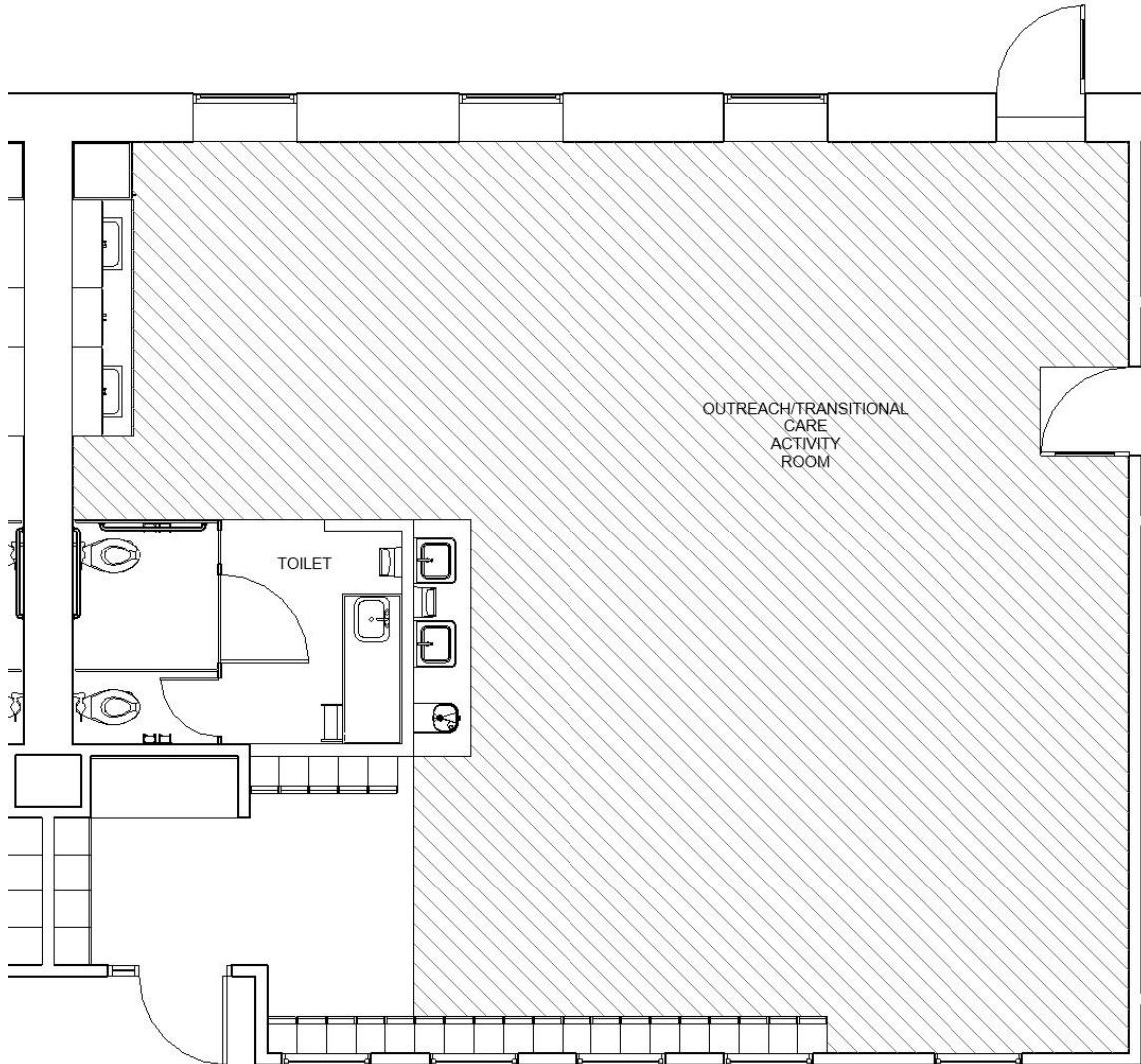
i. CABINETRY. Countertop and cabinet construction shall comply with General Cabinetry in Section 4 (Architectural) of General Requirements above. Salient features include ease of cleaning, maintenance, and repair with hard and smooth surface. Minimum 6' (1.8m) wide base and wall cabinets with one (1) stainless steel, 22" (559mm) x 18" (457mm) x 10" (254mm) deep utility sink with a goose neck faucet. Countertop shall be 34" (864mm) AFF. Install upper cabinets wall to wall above the washers and dryers.

j. FIRE PROTECTION. Must be a 1-hour fire rated enclosure. All penetrations of the fire rated enclosure shall be fire caulked with red caulking IAW NFPA requirements. If the washer plumbing connection box is recessed within a rated wall assembly, the box shall be 1 hour rated. If the walls required to be 1 hour rated do not extend to and are not sealed to the bottom of the roof deck, then the ceiling must meet the same fire ratings as the walls. Smoke detector shall be provided in this area.

k. SPECIAL REQUIREMENTS. Dryer vents shall be individually and directly vented to the outside. A non-inline booster fan shall be provided for each dryer vent in accordance with the latest version of the International Mechanical Code (IMC). Provide a wall-mounted rack, over the mop sink, for hanging mops.

26. SPACE: Outreach/Transitional Care Activity Room. The following criteria is in addition to the General Requirements provided above.

- a. FUNCTIONAL DESCRIPTION.** Activity Room that functions for childcare; includes eating, sleeping, playing, and other activities. Room accommodates children on a short-term occasional basis (e.g., childcare for deployment support, Family Readiness Groups, etc.).
- b. ADJACENCIES.** Shall be adjacent to the corridor and shall have direct access to the exterior. Direct access to age-appropriate playground is also required. Shall have direct access to storage room.
- c. OCCUPANTS.** Two (2) Program Assistants and a maximum of 24 Children (depending upon age of children).
- d. MINIMUM AREA.** (See Section 16. Net Areas and Total Gross Building Area Chart above.) Program Area may not be any less than 840 SF. Program area is area that can be used for children’s activities. Areas such as circulation cannot be counted as program area. See drawing below for calculation of Program Area. Hatched area indicates portions of room that can be included in the minimum Program Area. Program area is calculated differently than net area or gross area.



Outreach/Transitional Care Room Net Program Area
Crosshatched Area

e. FLOOR and BASE. Base shall be seamless except at inside corners. Base shall be sealed to floor with USDA or NSF approved caulking.

f. WALLS. Wall material shall have the ability to absorb pushpins. Wall surface shall be able to withstand tape peeling. Where drinking fountains and/or lavatories are provided within the Activity Room space, a minimum 48" (1220mm) tall or to the bottom of the cap on the wing wall, whichever is higher, wainscot that is impervious to water and able to withstand daily sanitizing is required. This material shall extend to the floor and at least 18" (457mm) horizontally in both directions from the centerline of the equipment. As illustrated below, the walls around the toileting area shall be 4'-2" (1270mm) tall max.

g. DOORS/FRAME. All doors shall be provided with finger guards at the hinges, on the Activity Room side, up to a minimum height of 48" (1220mm). Finger guard shall be roll type. On exterior doors, finger guards shall not conflict with weather stripping. Interior doors shall be a minimum of half-height glass, with a clear width opening of 32" (812mm) and shall be provided with a 12-inch (305mm) wide sidelite on the latch side of the door. Exterior door shall be provided with full-width push pad panic hardware, shall be provided with self-closing device, shall have a clear width opening of 32" (812mm), open at least 110 degrees and have a low-profile threshold to ensure ease of crib emergency evacuation, and exit directly onto the outdoor play space. Exterior door shall be provided with a hold-open device as part of the self-closing device. Exterior doors shall be a minimum of half-height glass. Interior and exterior doors shall swing in the direction of exit travel.

h. EXTERIOR WINDOWS. Provide at least (2) exterior windows.

a) VISION PANELS/VIEW WINDOWS. At least (1) view window must be provided between this activity space and the corridor. In addition, not less than (2) vision panels must be provided between this activity space and the corridor.

i. CABINetry. Countertop and cabinet construction shall comply with General Cabinetry in Section 4 (Architectural) of General Requirements above. Provide the following:

a) A 5' (1.5m) wide sign-in desk with solid surface countertop and integral backsplash. Provide two (2) lockable, 24" (610mm) deep desk drawers and one (1) 2' (0.6m) wide base cabinet beneath the counter with recessed, flush mount drawer pulls. Drawers keyed to match doors in Food Prep/Arts and Crafts cabinetry. Electrical outlets and phone/data ports to be located above the counter. Refer to SD illustrations.

b) Provide 3 or 4 units of half-height, "z-locker", lockable wall lockers, with sloped tops secured to the wall, with a minimum size of 15" (381mm) x 15" (381mm) in the sign-in desk area. Each locker unit shall be 72" (1829mm) H. Lockers shall be sealed to the adjacent walls and floor. Z-lockers shall be lockable with individual padlocks, not with combination, keypad or keyed locks.

c) 8' (2.4m) wide base and wall cabinets with 2 stainless steel sinks plus a full height cabinet with adjustable shelves. Sinks shall be separated as much as possible and shall be provided with gooseneck faucets. Sink bowls shall be a minimum of 21" (533mm) W x 15-3/4" (400mm) D x 8" (203mm) H. Space shall be provided for an under-counter refrigerator. Consider providing 2 – 36" (915 mm) wide base cabinets with a 2' (0.6m) space between for the refrigerator. Base cabinets shall be lockable and may not have a protruding handle. All base cabinets in the facility shall be keyed alike. Refer to illustrations under General Requirements.

d) 24 pre-school cubbies, 12" (305mm) wide x 15" (381mm) deep x 48" (1220mm) tall permanently attached to walls (pre-manufactured). Provide upper shelf for hats and gloves and an open area at the base for boots and shoes and two (2) coat hooks in the middle section. Refer to illustrations under General Requirements above. Provided by Building Contractor.

j. ELECTRICAL. All electrical outlets, except for those mounted above countertops, shall be mounted 48" (1220mm) above the finish floor. Outlets provided above countertops shall be located no less than 18" (457mm) from the edge of the countertop. Two (2) electrical outlets to be provided above the backsplash (food preparation/art counter/sink), one (1) over each open counter area. Electrical outlet to be provided for under the counter refrigerator. Electrical outlet, data port, intercom, and phone connection at sign in desk to be provided. Provide task lighting at sign in desk. A minimum of 2 (two) outlets will be provided above the

cubbies in the program area and will be mounted between the vision panels. A minimum of 4 (four) duplex outlets will be installed, evenly spaced, on the exterior wall and the wall opposite the toilet area. In addition, provide 2 (two) voice/data outlets in the activity area. GFI outlets shall be provided as required by Code.

a) Provide lighting with dimming (continuous, flicker-free dimming from 100% to 10%) or a multilevel switching scheme (with one inboard lamp switched separately from outboard lamps to provide distinct, evenly distributed lighting levels.) Lighting within the child activity rooms must; sign-in desk and toilet be zoned together; and either an additional 2 zones or lamp control within the activity space, to allow different lighting levels for nap time and activity times. A minimum of 0.1 lumen must be maintained in the activity room to allow for camera operation.

b) On wall(s) where cribs will be located, electrical outlets shall be provided and shall be wired for future receptacles but will be provided with blank outlet plates. This will be coordinated with the users during design. The receptacles shall be provided to the building users.

c) Intercom device and telephone required as described in the General Requirements above.

k. **PLUMBING.** A drinking fountain is required on the wall outside the toilet area, as shown in the following diagram, mounted 20" (508mm) AFF to the rim. Plumbing for toilet/lavatory area, diaper changing table, and food preparation/art counter/sink area is also required.

l. **SPECIAL REQUIREMENTS.** Provide wall mounted emergency bag (backpack) hooks screwed into the structure at exterior doors at 6'-0" (1.8m) AFF.

27. SPACE: Outreach/Transitional Care Storage Room. The following criteria is in addition to the General Requirements provided above.

a. **FUNCTIONAL DESCRIPTION.** Storage room to support the Outreach/Transitional Care Room.

b. **ADJACENCIES.** Shall be directly accessible from the Outreach/Transitional Care Room

c. **OCCUPANTS.** CDC Staff.

d. **ELECTRICAL.** A minimum of 1 (one) electrical outlet is required.

e. **LIGHTING.** Lighting shall be manually controlled by a switch within the room.

f. **SPECIAL REQUIREMENTS.** Shelving shall be provided on 3 walls. A minimum of four (4) adjustable shelves with heavy-duty standards and brackets will be provided on each wall. At least one (1) 18" (457mm) deep shelf and two (2) 12" (305mm) deep shelves shall be provided on each wall. Shelving shall be able to support 100 pounds per lineal foot.

a) On all walls where shelving is provided, a red line must be provided in accordance with Storage Height Limitation Line requirements in section 7. Fire Protection of the General Requirements above.

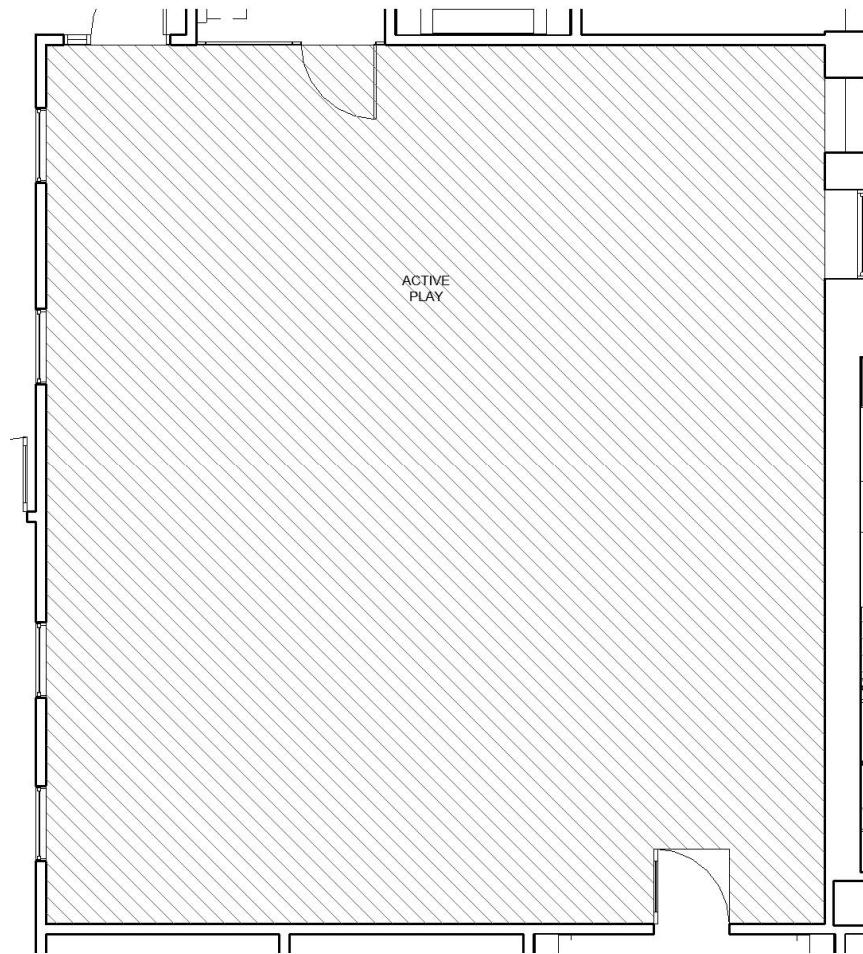
b) Dimensions of the room must accommodate an ABA 60" (1525mm) diameter turning circle. Adjustable shelves may encroach on this circle since they can be removed if necessary. Nothing else may encroach on the 5' (1.5m) circle.

28. SPACE: Outreach/Transitional Care Toilet Area. The following criteria is in addition to the General Requirements provided above.

- a. FUNCTIONAL DESCRIPTION.** Toilet area for CDC children.
- b. ADJACENCIES.** Shall be directly accessible from the Outreach/Transitional Care Room
- c. OCCUPANTS.** CDC Children with staff assistance.
- d. FLOOR and BASE.** Ceramic or porcelain tile floor and base. Flooring shall be slip resistant.
- e. WALLS.** On all walls, a minimum 48" (1220mm) tall or to the bottom of the cap on the wing wall, whichever is higher, ceramic or porcelain tile wainscot is required.
- f. TOILET PARTITIONS.** Top of toilet partitions shall be no higher than 48" (1220mm) tall with 12" (305mm) clear opening at bottom. Stall doors to be provided.
- g. PLUMBING.** Two (2) pediatric floor mounted water closets (one 10"-11" (254 to 279 mm) to rim, and one child ABA), two (2) child wall mounted lavatories (one 17" (430mm) AFF to the rim, one 20" (508mm) AFF to the rim) and diaper changing station to be located opposite the water closets. Stall doors shall be provided as shown in the SD drawing. The 10" (254mm) water closet to be located in the smaller stall, with the 17" (430mm) lavatory located within the toilet area. The 20" (508mm) lavatory shall be located around the corner. A floor drain is required in this area that shall have a self-priming trap or designed to prevent sewer gases from entering the occupied space by a proven and maintenance-free design. Provide toilet seats. Dual flush valve toilets are allowed; however, automatic flush valves are not allowed.
 - a)** For the sinks in the toilet area (not the sinks in the food prep/arts and crafts area), faucets shall be pre-mixed single push control that meets ABA requirements. Water shall run for at least 15 - 20 seconds.
- h. HVAC.** Two (2) point exhausts, each providing minimum 150 cubic feet per minute. One shall be provided near toilets in the toilet area, and one located directly over the diaper changing station.
- i. ELECTRICAL.** No electrical receptacles are allowed in this area.
- j. SPECIAL REQUIREMENTS.** Mirrors required above each lavatory. Mirrors shall be a tempered safety glass mirror, with stainless steel surround, including clear film applied to mirrored surface to retain glass pieces, if somehow the tempered mirror is cracked accidentally.
 - a)** One diaper changing station approximately 24" (610mm) deep x 60" (1525mm) long cabinet with sink integral to diaper changing surface, and retractable stairs with a handrail. Refer to 11. Diaper Changing Station under General Requirements. Provided by Building Contractor.
 - b)** The toilet stalls with the 13"-14" (330 to 355mm) high toilet and the lavatory mounted at 20" (508mm) AFF shall meet child ABA requirements.

29. SPACE: Active Playroom. The following criteria is in addition to the General Requirements provided above.

- a. FUNCTIONAL DESCRIPTION.** An active indoor play area for CDC children to utilize during inclement weather/temperature extremes.
- b. OCCUPANTS.** Program Assistant(s) and CDC children.
- c. MINIMUM AREA.** (See Chart above). See attached drawing for calculation of net Program Area. Hatched area indicates portions of room that can be included in the minimum net Program Area. For this space, program area is the same as net area.



Active Play Room Net Program Area
Crosshatched Area

- d. FLOOR and BASE.** Athletic flooring
- e. WALLS.** Salient characteristics include easy to clean, repairable, easy to maintain, and durable. Wall surface shall be able to withstand tape peeling. Walls shall be hardened to

withstand impacts from balls, trikes, etc. Where a wall of the Active Playroom is shared with an occupied space, the wall shall be designed to have a minimum STC rating of 55.

f. CEILING. Salient characteristics include durability to withstand impact from balls. In addition, ceiling shall provide acoustical control. At least 75% of the ceiling area shall be at least 9' high.

g. DOORS/FRAME. All doors shall be provided with finger guards at the hinges, on the Activity Room side, up to a minimum height of 48" (1220mm). Finger guard shall be rolling type. On exterior doors, finger guards shall not conflict with weather stripping. Interior doors shall be a minimum of half-height glass, with a clear width opening of 32" (812mm) and shall be provided with a 12-inch wide sidelite on the latch side of the door. Exterior door shall be provided with full-width push pad panic hardware, shall have a clear width opening of 32" (812mm), and direct exiting onto the outdoor play space. Exterior doors shall be a minimum of half-height glass. Interior and exterior doors shall swing in the direction of exit travel. Doors shall be provided with self-closing device.

h. EXTERIOR WINDOWS. Provide a minimum of one exterior window. Windowsills in this room shall be flush with the wall, and not protrude into the space.

i. VISION PANELS/VIEW WINDOWS. At least (1) view window and (2) vision panels must be provided between this space and the corridor.

j. ELECTRICAL. All electrical outlets shall be mounted 48" (1220mm) above the finish floor.

a) Intercom device and telephone required as described in the General Requirements above.

b) Provide lighting with dimming (continuous, flicker-free dimming from 100% to 10%) or a multilevel switching scheme (with one inboard lamp switched separately from outboard lamps to provide distinct, evenly distributed lighting levels.)

k. SPECIAL REQUIREMENTS. For safety reasons, no outside corners may occur in this space. Cased openings shall be provided with resilient corner guards or shall be rounded. Door hardware and toilet partition mounting shall be designed to reduce injury from impact.

a) Provide wall mounted emergency bag (backpack) hooks screwed into the structure at exterior doors at 6'-0" (1.8m) AFF.

b) Provide protective covers over all sprinkler heads, fire alarm/MNS strobe lights and speakers, exit signs, and fire alarm manual pull stations. This would also include HVAC thermostats.

30. SPACE: Active Play Storage Room. The following criteria is in addition to the General Requirements provided above.

a. FUNCTIONAL DESCRIPTION. Storage room to support the Active Playroom.

b. ADJACENCIES. Shall be directly accessible from the Active Playroom

c. OCCUPANTS. CDC Staff.

d. ELECTRICAL. A minimum of 1 (one) electrical outlet is required.

e. **LIGHTING.** Lighting shall be manually controlled by a switch within the room.

f. **SPECIAL REQUIREMENTS.** A minimum of four (4) adjustable shelves with heavy-duty standards and brackets will be provided on 3 walls. At least two (2) 18" (457mm) deep shelves and two (2) 12" (305mm) deep shelves shall be provided. Shelving shall be able to support 100 pounds per lineal foot.

a) On all walls where shelving is provided, a red line must be provided in accordance with Storage Height Limitation Line requirements in section 7. Fire Protection of the General Requirements above.

b) Dimensions of the room must accommodate an ABA 60" (1525mm) diameter turning circle. Adjustable shelves may encroach on this circle since they can be removed if necessary. Nothing else may encroach on the 5' (1.5m) circle.

31. SPACE: Active Play Toilet Area. The following criteria is in addition to the General Requirements provided above.

a. **FUNCTIONAL DESCRIPTION.** A child ABA-compliant toilet area for CDC children.

b. **ADJACENCIES.** Shall be directly accessible from the Active Playroom

c. **OCCUPANTS.** CDC Children with staff assistance.

d. **FLOOR and BASE.** Flooring shall be slip resistant.

e. **WALLS.** On all walls, a minimum 48" (1220mm) tall ceramic or porcelain tile wainscot is required.

f. **TOILET PARTITION DOOR.** A toilet partition and door will be used in lieu of a standard wall and door at the entrance to the Active Playroom Toilet. No toilet partitions are required within the toilet room. Top of toilet partition door shall be no higher than 48" (1220mm) tall with 12" (305mm) clear opening at bottom. Door shall be minimum of 32" clear opening to meet ABA.

g. **PLUMBING.** One (1) pediatric water closet (child ABA), and one (1) child lavatory (20" (508mm) to rim). A floor drain is required in this area that shall have a self-priming trap or designed to prevent sewer gases from entering the occupied space by a proven and maintenance-free design. Dual flush valve toilets are allowed; however, automatic flush valves are not allowed.

h. Sink faucet shall be pre-mixed single push control that meets ABA requirements. Water shall run for at least 15 - 20 seconds.

i. **HVAC.** A point exhaust, providing minimum 150 cubic feet per minute, shall be provided directly over the toilet.

j. **ELECTRICAL.** No electrical outlets are allowed in this area.

k. **SPECIAL REQUIREMENTS.** A mirror is required above the lavatory. Mirror shall be a tempered safety glass mirror, with stainless steel surround, including clear film applied to mirrored surface to retain glass pieces, if somehow the tempered mirror is cracked accidentally.

- a) A wall-mounted fold-down diaper station shall be provided in each Active Play Toilet Area.

32. SPACE: Nursing Mother's Room (Lactation Room). The following criteria is in addition to the General Requirements provided above.

- a. **FUNCTIONAL DESCRIPTION.** Individual private space for a nursing mother to provide care to their child. Space for glider/rocking chair and a small side table.
- b. **ADJACENCIES.** Shall be directly accessible from the Corridor.
- c. **OCCUPANTS.** One child and one adult.
- d. **CABINETRY.** Countertop and cabinet construction shall comply with General Cabinetry in Section 4 (Architectural) of General Requirements above. Provide a wall-to-wall 34" (684mm) high countertop with one (1) stainless steel sink, one (1) 24"(610mm) wide, lockable upper wall cabinet, and one (1) 24" (610mm) wide, lockable base cabinet keyed to match cabinetry throughout the facility. Space shall be provided for an undercounter refrigerator.
- e. **ELECTRICAL.** In addition to the outlets required by the NEC, provide at least two (2) outlets above the counter and one (1) electrical outlet for an undercounter refrigerator. Coordinate wall outlets with FF&E.
- f. **LIGHTING.** Provide overhead lighting with dimming controls (continuous, flicker-free dimming from 100% to 10%) separate from the light above the sink.
- g. **PLUMBING.** 1 adult ABA compliant, approximately 22" (559mm) x 18" (457mm) sink with a goose neck faucet.
- h. **SPECIAL REQUIREMENTS.**
 - a) No tile wainscot is required.
 - b) Provide mirror and light above sink. Provide 20" (508mm) wide by full length wall mounted mirror. See Section 4 (Architectural) under General Requirements for more information on Mirror requirements.
 - c) Provide two (2) wall mounted coat hooks, one at 48" (1220mm) AFF and one at 60" (1525mm) AFF.
 - d) Soap and paper towel dispensers to be coordinated with the installation and provided in accordance with the service contract.

33. SPACE: Corridor(s). The following criteria is in addition to the General Requirements provided above.

- a. **FUNCTIONAL DESCRIPTION.** Main Circulation Space
- b. **WALLS.** Walls shall be smoke partitions constructed in accordance with NFPA 101 Chapter 8. Wall material shall have the ability to absorb pushpins. Wall surface shall be able to withstand tape peeling. Also, wall surface shall be durable so that impacts from buggies and carts do not damage the wall.

c. DOORS/FRAME. All doors that open from normally occupied spaces, into the corridor, that are not located within a recessed alcove, must swing 180 degrees to avoid reducing the usable corridor width. Only infrequently used doors, which includes janitor's closet, electrical closets, and telecommunications closet doors may open into the corridor without either a recess or an 180° door swing. Doors leading to the outside from the corridor must also be provided with a sidelite. All doors opening into the corridor are required to have self-closing devices.

d. ELECTRICAL. Outlets to be mounted 18" (457mm) AFF.

e. PLUMBING. Provide a wall-mounted drinking fountain, 20" (508mm) AFF to the rim, near the Active Playroom as shown on the SD drawing set.

f. SPECIAL REQUIREMENTS. Corridor SHALL have a minimum clear width of NO LESS THAN 6'-2" (1880mm), to allow for bulletin boards, window/door frames, fire extinguisher cabinets, and other projections in order to maintain the minimum corridor width requirement of 6'-0" (1.8m).

a) Provide wall mounted bulletin boards and art rails utilizing tackles strips at 36" (915 mm) AFF along the corridor walls for each Activity Room.

34. SPACE: Recycling Room (Optional). The following criteria is in addition to the General Requirements provided above.

a. FUNCTIONAL DESCRIPTION. Space for recycling bins.

b. OCCUPANTS. CDC Staff.

c. ADJACENCIES. Directly accessible from the corridor.

d. DOORS/FRAME. Salient characteristics include durability. Doors, frames, and hardware shall be able to withstand constant opening and closing. Doors shall be provided with self-closing devices. Door shall be fitted with a locking mechanism (See Chart above.) and lever type handle that allows the door to be opened from the inside while locked. Doors shall be a minimum of half-height glass.

e. ELECTRICAL. Lighting shall be manually controlled by a switch within the room.

f. SPECIAL REQUIREMENTS. Shelving shall be provided on at least 1 wall. Four (4) adjustable shelves with heavy-duty standards and brackets will be provided on each wall and shall consist of two (2) 18" (457mm) deep shelves and two (2) 12" (305mm) deep shelves. Shelving shall be able to support 100 pounds per lineal foot.

a) On all walls where shelving is provided, a red line must be provided in accordance with Storage Height Limitation Line requirements in section 7. Fire Protection of the General Requirements above.

b) Dimensions of a room requiring entry must accommodate an ABA 60" (1525mm) diameter turning circle. Adjustable shelves may encroach on this circle since they can be removed if necessary. Nothing else may encroach on the 5' (1.5m) circle.

35. SPACE: Maintenance Storage. The following criteria is in addition to the General Requirements provided above.

a. FUNCTIONAL DESCRIPTION. Storage of equipment used for regular maintenance and repair of the facility.

b. OCCUPANTS. CDC Staff.

c. ADJACENCIES. Directly accessible from the exterior of the building.

d. FLOOR and BASE. Salient characteristics include easy to clean, durable (able to withstand wet and dirty conditions), such as sealed concrete. A base material, appropriate for the flooring material used, is required.

e. WALLS. Salient characteristics include easy to clean, repairable, easy to maintain, and durable. Design walls to avoid energy loss from the surrounding conditioned spaces.

f. CEILING. Salient characteristics include resistance to environmental conditions, such as changes in air pressure and high humidity, and shall be durable. Design the ceiling to avoid energy loss from the surrounding conditioned spaces.

g. DOORS/FRAME. Salient characteristics include easy to clean, able to withstand continuous use, and easy to maintain and repair. Each room to be provided with a pair of 3 foot (0.9m) by 7 foot (2.1m) doors, with each leaf provided with minimum of half-height glass panels. No astragals shall be provided. Instead, top and bottom flush bolts are to be provided on the inactive leaf. Adequate weather-stripping shall be provided to prevent access by vermin.

h. HVAC. Minimal conditioning of this space to be provided in extreme climates.

i. ELECTRICAL. Provide a minimum of 2 (two) outlets.

j. LIGHTING. Lighting shall be manually controlled by a switch within the room.

k. SPECIAL REQUIREMENTS. Four (4) adjustable shelves with heavy duty standards and brackets will be provided on the back wall. Shelves shall be a minimum of 18" (457mm) deep. Shelves shall be able to support 100 pounds per lineal foot.

a) On all walls where shelving is provided, a red line must be provided in accordance with Storage Height Limitation Line requirements in section 7. Fire Protection of the General Requirements above.

b) Dimensions of the room must accommodate an ABA 60" (1525mm) diameter turning circle. Adjustable shelves may encroach on this circle since they can be removed if necessary. Nothing else may encroach on the 5' (1.5m) circle.

I. FIRE PROTECTION. Smoke detectors shall not be provided unless required by UFC 3-600-01.

36. SPACE: Utility Rooms (Mechanical, Electrical, Communications). The following criteria is in addition to the General Requirements provided above. These spaces are primarily driven by code and installation requirements. Since Children and CDC Staff do not have access to these areas, there are no program specific requirements for these spaces.

a. OCCUPANTS: DPW and related personnel – No CDC Staff or Children.

b. DOORS/FRAME: Salient characteristics include durability. Doors, frames, and hardware shall be able to withstand constant opening and closing. Doors shall be provided with self-closing devices. Door shall be fitted with a locking mechanism (See Chart above) and lever type handle or other hardware as required by DPW. Exterior doors into these areas may be flush type (no glass). It is preferred that these rooms only open directly to the exterior, away from staff and children. However, in some cases additional electrical and communications rooms must be provided within in the facility. Whenever one of these spaces opens into the facility, the door must be minimum of half-height glass.

c. Wall: Walls of Mechanical Room shall be smoke partitions.

d. FIRE PROTECTION: Smoke detectors shall not be provided unless required by UFC 3-00-01.

37. SPACE: Playground/Outdoor Play Areas

a. GENERAL. Outdoor play areas (playgrounds) serve as extensions of classroom spaces and must be provided to support programming. Playground installation must be in accordance with the current versions of Consumer Products Safety Commission (CPSC) Handbook for Public Playground Safety, all applicable American Society for Testing and Materials (ASTM) standards, and ABA requirements as adopted by the Department of Defense (DoD).

a) Specific play areas are defined by several elements. Elements include circulation paths, open play areas/natural turf, age-appropriate equipment, play structures, natural components, fall attenuation material for use zones, shade structures and fencing.

b) Contractor shall provide written documentation that playgrounds meet standards and have been inspected by an independent Certified Playground Safety Inspector (CPSI) prior to turning over to the Government. Documentation of installation and inspection shall be maintained by the Installation CYS staff.

b. AREA. Playground area is to be divided into individual areas to accommodate the different age groups occupying the facility. Three (3) separate play areas are required for various age groups of children. In general, these areas will serve infant/pre-toddler, toddler/preschool, and pre-kindergarten/kindergarten. Installation input is required to finalize the age groups to be served by each playground.

a) The playground area must be capable of supporting 50% of the children at any given period of time at a minimum of 100 sq. ft. per child using the outdoor play space.

b) Minimum Outdoor Play Area per facility size shall be as follows:

- i.** Small – 18,150 square feet (1686m²)
- ii.** Medium – 27,120 square feet (2519m²)
- iii.** Large – 42,100 square feet (3911m²)

c. EXITS. All Activity Rooms (Infant/Pre-Toddler/Toddler, Pre-school/Pre-K/Kindergarten, Outreach Transitional Care, and Active Playroom) MUST exit directly to the fenced playground area. Playground exit gates shall be provided to allow egress from the building to a safe, open area at least 50' away from the building.

d. SAFETY SURFACING. A playground safety surface shall be provided throughout all use zones and under all play equipment. The safety surface must meet applicable ASTM requirements. Other surfaces meeting or exceeding the performance of a unitary or poured in place (PIP) material may be considered. The selected material shall be light in color to lessen the possibility of injury due to extremely hot surfaces. Rubber matting at foot contact point underneath the swings is strongly recommended to extend the life of the safety surfacing material. Beneath the infant swings, a unitary safety surface will be used.

- a)** Safety surfacing shall not terminate at sod. It shall terminate at a sidewalk or have curbing to prevent damage to surfacing from lawn care equipment.
- b)** Sub-surface draining shall be provided to help prevent flooding and keep playgrounds functional.

e. TRIKE PATHS. Trike paths are a requirement and dual function as an evacuation route, as well as a play element. A portion of the trike path must provide direct access to a gate in the exterior fence. This gate must be located no less than 50' (15m) from the building in any direction. The portion of the trike path leading to this gate must be smooth with no rumble strips. Other portions of the trike paths shall provide some different textures such as rumble strips, etc. Trike paths must be a minimum of 5' (60" or 1525mm) wide and shall be of concrete. Trike paths shall not be made of, or covered with, safety surfacing.

- a)** A set of rumble strips in a minimum of two (2) locations must be provided in the trike path in each playground. Rumble strips shall be created by sawing the concrete path, perpendicular to the direction of travel. Cuts shall be between 1/8" (3mm) and 1/4" (6mm) deep, at least 1/4" (6mm) wide, 2"-3" (51-76mm) on center apart, and end within 3" (76mm) of the edge of the sidewalk. Stamped concrete or exposed aggregate are acceptable alternatives to the cut strips. Lengths of sections of rumble strips, or approved alternative, shall be no less than 3' (0.9m) in the direction of travel. Do not provide rumble strips on the direct exit route for cribs in the Infant Playground area.

f. FENCING. Outdoor Play Area must be entirely fenced. The three (3) playgrounds must be connected within the overall fenced area but must be separated by fencing and gates. Perimeter fencing shall be a minimum distance of 50' (15m) from the building.

- a)** All fencing must be vinyl coated chain-link security type minimum 6' (1.8m) high at the perimeter and 4' (1.2m) high to sub-divide play areas by age group. The guide wire at the bottom, and the wire fasteners used to secure the fence fabric to the poles, top rail, etc., shall also be vinyl coated. Bolt threads, nuts, and ends of wire fasteners shall face away from the playgrounds. Where fence fabric bolt threads and nuts are required to face a playground (generally between play areas), bolts will be trimmed to no more than two exposed threads and sharp edges will be dressed with a file. All wire fasteners used to secure the fence fabric to piping (poles, etc.), where the cut ends face an outdoor activity area, will be flush cut to reduce the introduction of cutting edges on the ends of the wires, and will be pointed downward. A top rail is required on the fence.
- b)** All gates shall open a minimum of 90 degrees in both directions (180 degrees total). Provide a minimum of one (1) gate within the perimeter fencing of each playground area as well as gates connecting the play areas. Exit gates shall be provided with an adult

controlled securing device to allow access for emergency and maintenance vehicles as well as egress from building. Gate width shall accommodate crib egress.

c) Fencing and gates shall be installed so that there are no gaps, greater than 3" (76mm) in height, under the fence that would allow animals to enter into the playground or allow children to become trapped and crawl out of the playground. Fencing must comply with the current version of ASTM F2049.

g. PLANTS. Poisonous or potentially harmful plants are prohibited in any part of a facility that is accessible to children. All plants not known to be nontoxic should be identified by name and checked with the "Peterson Field Guide – Venomous Animals and Poisonous Plants".

h. ARTIFICIAL TURF. No artificial turf may be used without a lead-free certification from the manufacturer as acceptable to IMCOM G9 CYS. Crumb rubber fill is prohibited.

i. FIRE DEVICES. Fire alarm audio and visual devices shall be provided for each playground.

j. INTERCOM. Each playground must be provided with a weather-proof intercom unit.

k. TRIP HAZARDS. There shall be no tripping hazards in the playgrounds. Mechanical and electrical equipment, as well as manholes, clean-outs, or other plumbing access may not be located within the fenced playground area.

l. APPROVALS. Playground design must be reviewed by garrison CYS staff and approved by IMCOM G9 CYS. Playground installation must be in accordance with the CPSC and all applicable ASTM standards. Contractor shall provide written documentation that playground meets those standards and has been inspected by a Certified Playground Safety Inspector (CPSI) prior to turning over to the Government. Documentation of installation and inspection shall be maintained by the garrison CYS staff.

m. DRINKING FOUNTAINS. Due to maintenance concerns, exterior drinking fountains or EWCs will not be provided in the playgrounds.

n. PLAYGROUND EQUIPMENT. When selecting equipment as part of a repair project, be sure to clarify what will be installed and what will be left portable. Portable items can be moved to change the outdoor environment to help keep it interesting, support curriculum, and allow staff to take advantage of the shifting shade. For example, it is preferable that traffic signs be portable or reversible.

a) A professional playground designer should be consulted to ensure equipment is age appropriate, required use zones are met and the design meets the current versions of CPSC Handbook for Public Playground Safety, all applicable ASTM standards, and ABA requirements as adopted by DoD.

b) The crossbars for swings shall be 7'-0" (2.1m) above the play surface to the top of the bar and shall be a minimum of 3.5" (89mm) in diameter. Bucket and belt swings shall be light colored to reduce the likelihood of burns.

c) Shade in the outdoor play areas is a requirement and must be provided by the Contractor as shown in the Playground Equipment list below. These permanent shade structures shall be a minimum 8'-0" (2.4m) height at the entry edges of the shade. Supporting posts shall be rounded. Padding may be required based on location to minimize collision injuries.

d) See plans and lists below for playground equipment requirements. Specific items

listed on the following pages are provided for information only to illustrate the minimum requirements. Where possible, equipment should reflect the local heritage.

NOTE: The following charts list the recommended playground equipment for the Small, Medium, and Large size facilities.

Playground Equipment Lists.

PLAYGROUND EQUIPMENT		
SMALL CDC FACILITY:		
INFANT/PRE-TODDLER <small>(designed for ages 6 weeks to 24 months)</small>	TODDLER/PRESCHOOL <small>(designed for the youngest of 2-5 age group)</small>	PRE-KINDER/KINDERGARTEN <small>(designed for ages 3 years to 5 years)</small>
<p>Trike Paths: As a minimum, surround the play structure & provide Rumble Strips on min. 2 sides of trike paths.</p> <ul style="list-style-type: none"> - 1 building façade (e.g., farmers market, electric car charging station, police dept., club house, etc.) - 2 different traffic signs* (stop, yield, speed limit, etc.) - trike storage <p>3 Play Structures:</p> <ul style="list-style-type: none"> 1 crawler, 1 interactive fun center, 1 climber <p>Swings: 1 belly swing, 2 full bucket seats and barrier per ASTM 2373</p> <p>2 Shade Structures: 20'x20' (6mX6m) to cover play structures & 15'x15' (4.6mX4.6m) over crawler feature.</p> <p>Play Elements w/Nature Component: sod/turf, 2 planter boxes, 1 water play, 1 nature bowl*, 2 musical instruments*, 1 paint panel*, 1 table with 4 seats.</p> <p>Other: 1 adult bench with back support.</p>	<p>Trike Paths: As a minimum, surround the play structure & provide Rumble Strips on min. 2 sides of trike paths.</p> <ul style="list-style-type: none"> - 2 building façades (e.g., farmers market, electric car charging station, police dept., club house, etc.) - 3 different traffic signs* (stop, yield, speed limit, etc.) - trike storage <p>Play Structure: Composite structure for min. 16 children, min. 2 platforms & 2 slides or 1 slide & 1 tunnel.</p> <p>Swings: 2 full bucket & 2 belt seats</p> <p>2 Shade Structures: 20'X20' (6mX6m) & another one of sufficient size to cover the play structure.</p> <p>Play Elements w/Nature Component: sod/turf, 2 nature bowls*, 2 musical instruments*, elevated feature with covers for sand and manipulative play*, 2 planter boxes, 1 water play, 1 paint panels*, drama deck, 2 tables with 4 seats each.</p>	<p>Trike Paths: As a minimum, surround the play structure & provide Rumble Strips on min. 2 sides of trike paths.</p> <ul style="list-style-type: none"> - 4 building façades (e.g., farmers market, electric car charging station, police dept., club house, etc.) - 4 different traffic signs* (stop, yield, speed limit, etc.) - trike storage <p>Play Structures: Composite structure for min. 20 children, min. 4 platforms, 3 slides & 1 other challenging rock or other climber.</p> <p>Swings: 4 belt seats.</p> <p>2 Shade Structures: 20'X20' (6mX6m) & another one of sufficient size to cover the play structure.</p> <p>Play Elements w/Nature Component: sod/turf, 3 nature bowls*, 3 musical instruments*, 3 planter boxes, 1 water play, 2 paint panels*, elevated feature with covers for sand and manipulative play*, drama deck, 3 tables with 4 seats each.</p>

*For other than MILCON projects, these items should be considered as portable with an enlarged base for stability.

PLAYGROUND EQUIPMENT		
MEDIUM CDC FACILITY:		
INFANT/PRE-TODDLER <small>(designed for ages 6 weeks to 24 months)</small>	TODDLER/PRESCHOOL <small>(designed for the youngest of 2-5 age group)</small>	PRE-KINDER/KINDERGARTEN <small>(designed for ages 3 years to 5 years)</small>
<p>Trike Paths: As a minimum, surround the play structure & provide Rumble Strips on min. 2 sides of trike paths.</p> <ul style="list-style-type: none"> - 1 building façade (e.g., farmers market, electric car charging station, police dept., club house, etc.) - 3 different traffic signs* (stop, yield, speed limit, etc.) - trike storage <p>3 Play Structures:</p> <ul style="list-style-type: none"> 1 crawler, 1 interactive fun center, 1 climber <p>Swings: 1 belly swing, 4 full bucket seats and barrier per ASTM 2373</p> <p>2 Shade Structures: 20'x20' (6mX6m) to cover play structures & min 15'x15' (4.6mX4.6m) over crawler feature.</p> <p>Play Elements w/Nature Component: sod/turf, 2 planter boxes, 1 water play, 1 nature bowl*, 2 musical instruments*, 1 paint panel*, 1 table with 4 seats.</p> <p>Other: 1 adult bench with back support.</p>	<p>Trike Paths: As a minimum, surround the play structure & provide Rumble Strips on a min. 2 sides of trike path.</p> <ul style="list-style-type: none"> - 3 building façades (e.g., farmers market, electric car charging station, police dept., club house, etc.) - 3 different traffic signs* (stop, yield, speed limit, etc.) - trike storage <p>2 Play Structures:</p> <ul style="list-style-type: none"> a. Composite structure for min. 42 children, min. 5 platforms & 3 slides. b. Interactive/creative play to include steps, seats, and other active features. Accommodate min. of 5 children at one time. <p>Swings: 2 full bucket & 2 belt seats</p> <p>2 Shade Structures: 20'X20' (6mX6m) & another one of sufficient size to cover the play structure.</p> <p>Play Elements w/Nature Component: sod/turf, 3 nature bowls*, 3 musical instruments*, elevated feature with covers for sand and manipulative play*, 3 planter boxes, 1 water play, 2 paint panels*, drama deck, 3 tables with 4 seats each.</p>	<p>Trike Paths: As a minimum, surround the play structure & provide Rumble Strips on min. 2 sides of trike paths.</p> <ul style="list-style-type: none"> - 4 building façades (e.g., farmers market, electric car charging station, police dept., club house, etc.) - 4 different traffic signs* (stop, yield, speed limit, etc.) - trike storage <p>3 Play Structures:</p> <ul style="list-style-type: none"> a. Composite structure for min. 20 children, min. 4 platforms, 3 slides & challenging rock or other climber. b. Interactive/creative play to include steps, seats, and other active features. Accommodate min. of 5 children at one time. c. Climber <p>Swings: 4 belt seats.</p> <p>2 Shade Structures: 20'X20' (6mX6m) & another one of sufficient size to cover the largest play structure.</p> <p>Play Elements w/Nature Component: sod/turf, 3 nature bowls*, 3 musical instruments*, 4 planter boxes, 1 water play, 3 paint panels*, elevated feature with covers for sand and manipulative play*, drama deck, 4 tables with 4 seats each.</p>

*For other than MILCON projects, these items should be considered as portable with an enlarged base for stability.

PLAYGROUND EQUIPMENT		
LARGE CDC FACILITY:		
INFANT/ PRE-TODDLER <small>(designed for ages 6 weeks to 24 months)</small>	TODDLER/PRESCHOOL <small>(designed for the youngest of 2-5 age group)</small>	PRE-KINDER/KINDERGARTEN <small>(designed for ages 3 years to 5 years)</small>
<p>Trike Paths: As a minimum, surround the play structure & provide Rumble Strips on min. 2 sides of trike paths.</p> <ul style="list-style-type: none"> - 2 building façades (e.g., farmers market, electric car charging station, police dept., club house, etc.) - 3 different traffic signs* (stop, yield, speed limit, etc.) - trike storage <p>4 Play Structures:</p> <ul style="list-style-type: none"> 1 crawler 1 interactive fun center 1 climber and 1 playhouse <p>Swings: 1 belly swing, 4 full bucket seats and barrier per ASTM 2373</p> <p>2 Shade Structures: 20'x20' (6mX6m) to cover play structures & one over crawler feature.</p> <p>Play Elements w/Nature Component: sod/turf, 2 planter boxes, 1 water play, 1 nature bowl*, 2 musical instruments*, 1 paint panel*, 1 table with 4 seats.</p> <p>Other: 1 adult bench with back support.</p>	<p>Trike Paths: As a minimum, surround the play structure & provide Rumble Strips on min. 2 sides of trike path.</p> <ul style="list-style-type: none"> - 4 building façades (e.g., farmers market, electric car charging station, police dept., club house, etc.) - 4 different traffic signs* (stop, yield, speed limit, etc.) - trike storage <p>4 Play Structures:</p> <ul style="list-style-type: none"> a. Composite structure for min. 30 children, min. 4 platforms & 2 slides. b. Interactive/creative play to include steps, seats, and other active features. Accommodate min. of 5 children at one time. c. Structure with spiral slide, slide/tunnel, min. 3 platforms, accommodate min 30 children. d. Interactive/creative play to include steps, seats, and other active features different from the other one. Accommodate min. of 5 children at one time. <p>Swings: 2 full bucket & 2 belt seats</p> <p>2 Shade Structures: 20'X20' (6mX6m) & another one of sufficient size to cover the play structure.</p> <p>Play Elements w/Nature Component: sod/turf, 4 nature bowls*, 3 musical instruments*, elevated feature with covers for sand and manipulative play*, 4 planter boxes, 1 water play, 4 paint panels*, drama deck, 4 tables with 4 seats each.</p>	<p>Trike Paths: Two different trike paths. As a minimum, each surround a play structure. Rumble strips will be provided on min. 2 sides of trike paths.</p> <ul style="list-style-type: none"> - 5 building façades (e.g., farmers market, electric car charging station, police dept., club house, etc.) - 4 different traffic signs* (stop, yield, speed limit, etc.) - trike storage <p>4 Play Structures:</p> <ul style="list-style-type: none"> a. Composite structure for min. 32 children, min. 4 platforms, 3 slides (at least 1 wave & 1 curved) & challenging rock or other climber. b. Interactive/creative play to include steps, seats, and other active features. Accommodate min. of 5 children at one time. c. Climber d. Additional structure different from the other one for min. of 32 children. <p>Swings: 6 belt seats.</p> <p>2 Shade Structures: 20'X20' (6mX6m) & at least one other of sufficient size to cover the largest play structure.</p> <p>Play Elements w/Nature Component: sod/turf, 4 nature bowls*, 4 musical instruments*, 4 planter boxes, 1 water play, 4 paint panels*, elevated feature with covers for sand and manipulative play*, drama deck, 4 tables with 4 seats each.</p>

APPENDIX A: GUIDANCE FOR OCONUS LOCATIONS

This appendix outlines/clarifies the requirements for OCONUS Military Construction (MILCON) projects. While this Criteria provides a comprehensive framework, variations may occur based on Host Nation codes and requirements. Design requirements may be modified as needed to comply with Host Nation laws, codes, and generally accepted construction standards where practices are functionally equivalent and equal to or more stringent than US criteria. Variations need to be coordinated with the Facilities Design Team (FDT), and, if determined to conflict with the SD, variants will need to be submitted for adjudication via the waiver process.

ARCHITECTURAL

- Architectural requirements may exhibit slight variances due to local building codes, environmental conditions, and cultural considerations. These adaptations are necessary to ensure compliance with Host Nation standards and codes while maintaining the integrity and functionality of the standard design.
- Cabinetry: Cabinet sizes may differ from standard specifications to accommodate local manufacturing practices, available materials, and specific functional needs. It is imperative that the overall cabinetry length dimension is adhered to.
- Hardware: Door hardware may vary from standard specifications to align with local standards and practices. It is essential that all hardware meets required functionality specifications to ensure safety, accessibility, and performance in various operational conditions.
- Construction: Acceptable construction deviations (based on locally accepted construction tolerances) may range up to $\pm 5\%$ from the specified dimensions and standards. This flexibility allows for adjustments due to site conditions, material availability, and local practices, while still ensuring the overall integrity and performance of the project.
- Overall gross square footage may need to be increased for new facilities based on local wall assembly types and finishes; Host Nation accessibility requirements; and additional MEP and FP space requirements.
- Exterior roll down shades at Activity Room windows must maintain visibility into the classrooms.
- "Tilt and Turn" operable windows are an acceptable alternative to the standard single/double hung windows.

MECHANICAL

- HVAC in the Mother's room and Kitchen are required. Proper conditioning and climate control ensures a functional environment and prevents food spoilage. (provide comfort cooling in the facility)
- The goal during the design phase is to satisfy the mechanical and plumbing functional requirements as required in the standard design documents using the Host Nation's criteria, products, installation methods, and testing. The systems should be operable and maintainable using Host Nation's operations and maintenance (O&M) staff.

- When selecting plumbing fixtures sizes, it is recommended to choose dimensions as close to standard requirements within this document as possible with a minimal variance of 25mm-51mm (1"-2"). Plumbing fixtures must still meet ABA requirements where applicable. This approach will facilitate the procurement of locally standard plumbing fixtures and reduce the need for custom fixtures.
- Based on lessons learned, OCONUS regulations may require an emergency pull string at the toilet with corresponding alert at the reception desk.
- Net areas of utility rooms OCONUS are commonly larger than what is identified in the standard design. This is because the requirements for clearances required for maintenance are larger.
- If filtered refrigerated potable water is deemed insufficient for drinking, it is essential to implement alternative solutions. PDTs should coordinate with local stakeholders and DPW to ensure access to safe drinking water is available.

ELECTRICAL

- Ground Fault Circuit Interrupters: All electrical installations must include Ground Fault Circuit Interrupters (GFCI) or the Host Nation's equivalent safety devices. This measure is critical to protect against electrical shock and ensure compliance with local safety regulations.
- Kitchen: it is highly suggested to install 380V power outlets to ensure compatibility with high-performance equipment. This voltage standard supports efficient operation, enhances energy management, and meets the specific power requirements of commercial cooking appliances, promoting safety and reliability in kitchen operations.

TELECOMMUNICATION

- The VSS must meet local regulations and standards, ensuring compliance with Host Nation requirements. All specifications should reflect the unique environmental and operational conditions of the site while maintaining the intent and functionality of the standard. Coordination with local authorities and stakeholders is essential to ensure that all aspects of the VSS are effectively implemented and adhered to.
- The VSS must comply with Host Nation cable run length specifications to ensure safety and optimal performance in electrical installations.

FIRE PROTECTION

- Projects OCONUS shall be designed based on the most stringent of US and HN fire protection and life safety requirements.

SITE/CIVIL

- Parking: Parking requirements may be modified according to need, demand, or site constraints in collaboration with stakeholders. This ensures compliance with the standard design and local regulations and optimizes the use of available space while maintaining functionality and accessibility for facility users.

- In lieu of chain link fencing, it is an acceptable betterment to use rigid rectangular welded wire mesh for playground fencing.

ANTI-TERRORISM/ FORCE PROTECTION

- If the project site is restrictive in size, reduced standoff distances result in increased requirements for exterior load bearing structures and window blast loads, impacting cost and scope.

FOOD SERVICE

- See TB Med 530 Tri-service Food Code regarding procurement of foreign-manufactured food service equipment and other applicable guidance.

APPENDIX B: ACCEPTABLE BID OPTIONS

For this facility, the COS will consider bid options that align with our commitment to child safety, quality, cost-effectiveness, and project objectives for a complete and usable facility. PDTs shall engage the COS if a bid option conflicts with the Army Standard or Standard Design Criteria. The following bids options are acceptable, but not limited to:

- Detached, covered walkway to the main entry and/or bus drop-off shelter
- Using architectural grade shingles in lieu of SSMR
- PDT agreed upon architectural betterments such as roof dormers, interior finishes, mechanical yard screen walls, etc.
- Generator for facility wide backup power
- Local alarms at all exterior doors throughout the facility